



TAPMI

(A constituent unit of MAHE, Manipal)



# WHERE EDUCATION MEETS EXPERIENTIAL LEARNING

MASTER OF BUSINESS ADMINISTRATION

## 2025-2027

PROSPECTUS FOR ADMISSIONS



T A Pai Management Institute

(A Constituent Unit of Manipal Academy of Higher Education)

# TAPMI

WHERE LEARNING IS FOR LIFE

## TAPMI'S MISSION STATEMENT

To excel in management education,  
research and practice.



Excellence



Innovation



Trust



Commitment



Honesty



Student-centric







# THE TAPMI ADVANTAGE



Legacy of  
42 years



7000+ alumni



Ranked consistently  
amongst top  
B-Schools in India



Experiential  
Learning



100% placement  
record year-on-year



Industry collaboration  
for cutting edge  
courses



World class  
accreditations -  
AMBA & AACSB



A Constituent Unit  
of MAHE  
(Institute of Eminence)



Life in beach town of  
Udupi-Manipal and a  
gorgeous 44-acre  
green campus



Scholarships  
and Awards  
available up to  
2.9 Crores



Excellent Infrastructure with  
AC classrooms, AC hostels, and  
state-of-the-art educational facilities  
such as Bloomberg Labs

**TAPMI***(A constituent unit of MAHE, Manipal)*

## FOUNDER OF **MANIPAL**

Late Shri Dr. T M A Pai

Padma Shri Awardee

(1898 – 1979)



Born on 30th April 1898 at Kallianpur of Udupi District of Karnataka, Dr Tonse Madhav Ananth Pai was a self-made man who could understand the local problems, and his desire to serve the people motivated him to find ways and means commensurate with the conditions prevailing in those days. He had a great fascination for spreading education among youth from less privileged backgrounds in particular. He set up premier institutions such as the Kasturba Medical College Manipal in 1953 as the first non-missionary self-financing medical college in the private sector in India occupying the 29th place among the Medical Colleges started in India since 1835, created massive change and development in the educational circles. Continuing his thrust for providing higher education opportunities to the youth, he set up professional colleges of Engineering, Nursing, Pharmacy, and Dental Sciences at Manipal. He was keen to make the Manipal campus a university seat and presented the case to the state and the central Governments. Dr.T.M.A Pai was conferred the prestigious Padma Shri Award by the President of India in 1965. Earlier the Government of Mysore had honoured him with the Public Service Award in 1962, and in 1974, the Mysore University honoured him with the Doctor of Science (Honoris Caus) degree. The secrets of his success were his vision to see what was needed and what was possible and his courage to start new institutions where others felt impossible to succeed. His philosophy was one of service to one's family, friends and the world's people as God's one big family. He lived through his philosophy and his name will be forever etched in people's memory.



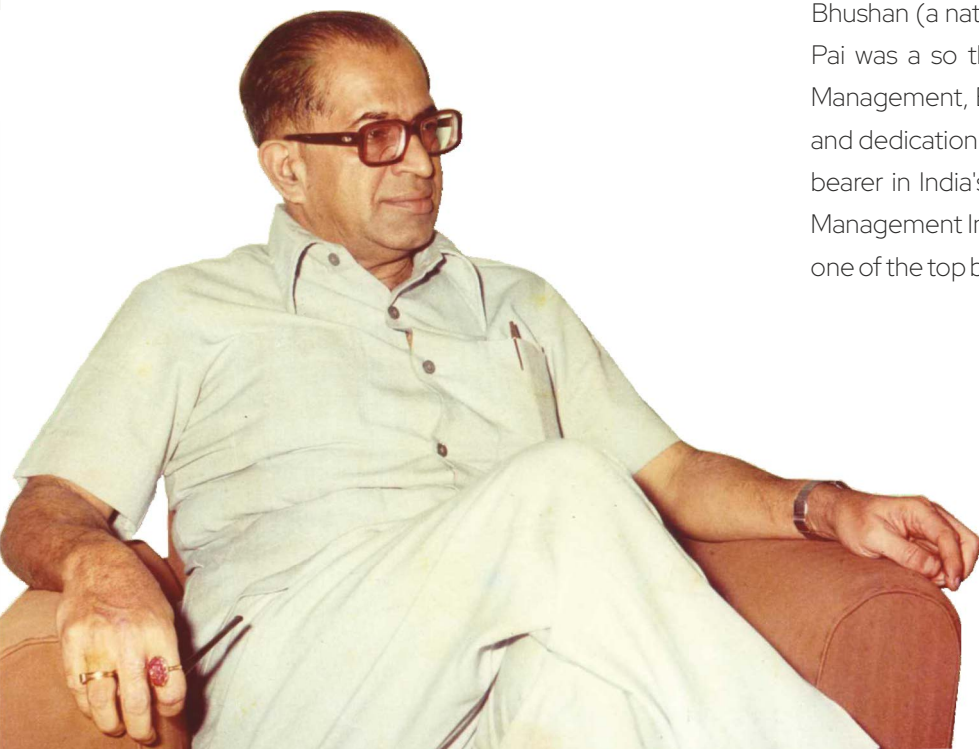


# FOUNDER OF TAPMI

Late Shri Tonse Ananth Pai

Padma Bhushan Awardee  
(1922 – 1981)

The year 2022 is the centenary year of the birth anniversary of Shri Tonse Ananth Pai (17 January 1922 – 29 May 1981), one of the few men who catapulted a small village into a model for the world to follow. In a career spanning thirty-eight years, Shri T A Pai's contributions to nation-building took many forms. He played roles as a politician, held positions such as that of the Railway Minister of India, was in the education, insurance and banking sectors. Under Shri Ananth Pai's stewardship, Syndicate Bank embarked on ground-breaking rural expansion programs with innovative features. In 1970, Shri Ananth Pai was appointed as the chairman of Life Insurance Corporation of India (LIC). Pleased with his tremendous contribution the government conferred the award of Padma Bhushan (a national honour in India) in the year 1972. Dr T. A. Pai was also the first Chairman of the Indian Institute of Management, Bangalore. His commitment to nation building and dedication to social development have made him a torch bearer in India's illustrious history. He founded the T. A. Pai Management Institute in 1980, which has gone on to become one of the top business schools in the country.





# TAPMI

(A constituent unit of MAHE, Manipal)



## OUR LEADERS SPEAK



### VICE CHANCELLOR'S - WELCOME MESSAGE

#### **Lt Gen (Dr) M. D. Venkatesh**

VSM (Retd). Vice Chancellor

Dear Aspirants,

We are thrilled to welcome you to T. A. Pai Management Institute (TAPMI), one of India's premier management schools and a proud constituent unit of the Manipal Academy of Higher Education (MAHE), an Institution of Eminence (IoE), Deemed to be University.

As you embark on this exciting journey, you are stepping into a world-class academic environment designed to prepare you for the fast-paced, ever-evolving global business landscape. The program at TAPMI is crafted to challenge, inspire, and equip you with the skills and knowledge needed to thrive as a leader in today's dynamic world.

At TAPMI, you will have access to cutting-edge academic resources, unparalleled research opportunities, and state-of-the-art infrastructure. This is your chance to make the most of these exceptional facilities, explore your potential, and embrace the transformative experiences that await you.

We are confident that your time at TAPMI will be immensely rewarding, offering you a rich and holistic learning environment that sets you on the path to success. Welcome to the TAPMI and MAHE family—we can't wait to see all that you will achieve!







## PRO VICE CHANCELLOR'S MESSAGE

### **Prof. Madhu Veeraraghavan**

Pro Vice-Chancellor [MAHE, Bangalore Campus]

Pro Vice-Chancellor, [Management, Law, Humanities and Social Science]

Manipal Academy of Higher Education, T.A. Pai Chair Professor of Finance,

Dr. TMA Pai Endowment Chair in Management Research

Dear MBA of 2027,

Greetings from TAPMI!

If you have picked this prospectus, it is a sign of great things to come in your life. Irrespective of whether it was an act driven by design or destiny, the very fact TAPMI is a top option for your MBA is enough indication that you will eventually choose well.

TAPMI is a high performance business school and is placed in the management, law, humanities and social sciences wing of MAHE, Manipal. TAPMI is a jewel in the MAHE crown. When you are evaluated by the world after your TAPMI experience, your Colour, your Clarity, your Cut and your Carat will be rated, as all precious jewels are rated. Your colour will be the colour of success. Your clarity of purpose, of knowledge, of application and of intent shall make you extremely desirable to governments, institutions, businesses and organisations alike. TAPMI's academic

rigour shall ensure your cut is modern, relevant and, well, certainly above the rest. And your carat will always be on the heavier side of the value scale.

You are in a position to consider your admission to the TAPMI MBA because of your good past performance. TAPMI will enhance your present to be better. Finally, your TAPMI experience will mean that your future is among the best that can be!

As you read through this prospectus, you will find enough and more reasons to choose the TAPMI MBA. You will find the course that appeals to you. Whatever your choice, TAPMI assures you of a scintillating and stimulating scholastic experience.

As always, TAPMI is ever ready to welcome you on board!

Here's wishing you happy choices!



# TAPMI

(A constituent unit of MAHE, Manipal)



## OUR LEADERS SPEAK



### DIRECTOR'S MESSAGE

#### **Prof. Rajeew Kumra**

Director

Dear Aspirant,

Greetings from TAPMI!

You just indicated you have an excellent sense of selection by putting TAPMI in your basket of options for your best-in-class MBA. Welcome to TAPMI, where we envision and nurture the leaders of tomorrow. We deliver programs that are rigorous, relevant and focused on your holistic development. Our systems, processes, and people are working in a mission mode, putting you at the centre of the Institute. As you stand at the threshold of your MBA journey, we invite you to embark on a transformative experience that goes beyond academic excellence. Over the last 40 years, TAPMI has been a pioneer in delivering excellence in the field of management. TAPMI has merged with the Manipal Academy of Higher Education (MAHE), an Institution of Eminence recognized by the Government of India. Going forward, a TAPMI student will be able to access world-class resources of both institutions, creating a unique and rich student experience. We are part of a

select group of institutions with the coveted double crown [AACSB and AMBA] accreditations. These recognitions are a testimony to the quality of our faculty, staff and facilities. Today, a degree from TAPMI is a passport to professional success. Our stellar placement record and corporate connect is a consequence of our high academic standards. Over the years, our alumni/graduates have made significant contributions at top-notch institutions across the country and around the world. TAPMI offers an exciting range of programs, a prospective student will make a choice based on their career aspiration. Irrespective of the Program choice, we assure you of an enriching experience that draws strength from synergies across all our Program offerings.

Wishing you all the very best. Godspeed!!!! Here's hoping to find you in TAPMI's Batch of 2025-2027; as you can see, we are eagerly waiting for you!





## DEAN'S MESSAGE

### **Dr. Aditya Mohan Jadhav**

Professor and Founding Dean, TAPMI-Bengaluru

Dear Applicants,

India is emerging as a reliable ally in shaping the future of technology. As India's global economic influence grows, there is a high demand for competent experts who can integrate technology and business effectively. Indian origin leaders are valued immensely by global companies that seek to explore new opportunities and expand their growth. These leaders, who have been educated in India, have set the example for others at Microsoft, Google, IBM.

Creating global technology products & companies from India is a growing imperative for Indian managers, who can lead the way for a new era of growth and global leadership. The use of artificial intelligence, data analytics, blockchain, and other advanced technologies in everyday work highlights the need for a new breed of leaders who can skilfully use these tools to boost growth, innovation, and competitiveness.

The MBA Technology Management program will train

management experts who can identify and transform the business potential of emerging technologies into technology solutions and offerings. The program lasts for 2 years (6 trimesters) and is delivered in TAPMI Bangalore campus, with teaching by industry practitioners and academic research scholars and ongoing real-world projects in prominent Technology firms in Bangalore and other Technology centres.

For industry professionals with 2-7 years of experience in the industry with a passion for value creation through technology, this is the right program to fast forward their careers.

Embracing Technology, Enhancing Business



# TAPMI

*(A constituent unit of MAHE, Manipal)*





# One Institute Two Campuses





TAPMI

(A constituent unit of MAHE, Manipal)



TAPMI TODAY

## B-School Ranking 2024-25

Outlook (2024)

#4

among Private MBA  
Institutions in India

#2

among Private B  
Schools – South Zone

National Institutional Ranking  
Framework (NIRF) India Rankings 2024

#58

in Management Category  
[https://www.nirfindia.org/2023/  
ManagementRanking.html](https://www.nirfindia.org/2023/ManagementRanking.html)

Business Today (2024)

#21

Overall Rank

India Today (2024)

#21

Overall Rank

GHRDC Times (2024)

#1

in Ranking of  
Exemplary B Schools

CSR (2024)

#1

in Top Private  
Supreme B-schools

The Week (2024)

#17

Overall Ranking

#9

among Private B  
Schools

#1

among Private  
B Schools – South Zone



# Accreditations



Accredited by Association to Advance Collegiate Schools of Business (AACSB). The current accreditation is valid till 2027.



Accredited by the Association of MBAs (AMBA). The current accreditation is valid till August 2026.



All 5 MBA programs offered at TAPMI, Manipal, are approved by AICTE. The New MBA-Technology Management program is in the process of approval.



The Post Graduate Programs of TAPMI are recognized by the Association of Indian Universities (AIU).



The National Board of Accreditation has accredited the MBA programs.



TAPMI is a signatory to PRME (Principles of Responsible Management Education), which is a United Nations supported initiative and the largest organized relationship between the UN and business schools across the world. TAPMI has made a commitment to advancing values such as sustainability, responsibility and ethics in teaching, research and thought leadership.



TAPMI is one of the few institutes to be recognized by Beta Gamma Sigma for its academic excellence in business studies. This recognition grants TAPMI students access to a global network of over 580 collegiate chapters and 820,000 lifetime members.



TAPMI's MBA-Marketing program is accredited by the Chartered Institute of Marketing (CIM), UK, granting students exemptions on CIM qualifications and access to a global network of marketing professionals.







TAPMI

(A constituent unit of MAHE, Manipal)





# TAPMI PROGRAMS

TAPMI believes that academics should facilitate the holistic development of the students who join the 2-year postgraduate programs. TAPMI's approach brings out the best in the students through continuous evaluation and insistence on frequent and high-quality work outputs.

- MBA
- MBA - BKFS  
(Banking and Financial Services)
- MBA - Marketing  
Management
- MBA - HRM  
(Human Resource Management)
- MBA - IB\*  
(International Business)
- MBA - Technology  
Management\*\*  
(TAPMI Bengaluru Campus)
- MBA - Artificial  
Intelligence and  
Data Science\*\*\*  
(MBA-AI & DS)

\* MBA-International Business is semester-based program while others are trimester based. (Subject to curriculum revision for the 2025 - 2027 Batch)

\*\* MBA-Technology Management program is a 2-year (6 trimester) program based in TAPMI Bengaluru campus with instruction by industry professionals and academic research professors and continuous live projects in renowned IT companies in Bangalore and other IT hubs.

\*\*\* MBA- Artificial Intelligence and Data Science is a 2-year (6 trimester) program which is co-taught with the faculty of Manipal School of Information Sciences, and industry professionals.







**TAPMI**

(A constituent unit of MAHE, Manipal)



## DR. T.M.A. PAI BLOCK



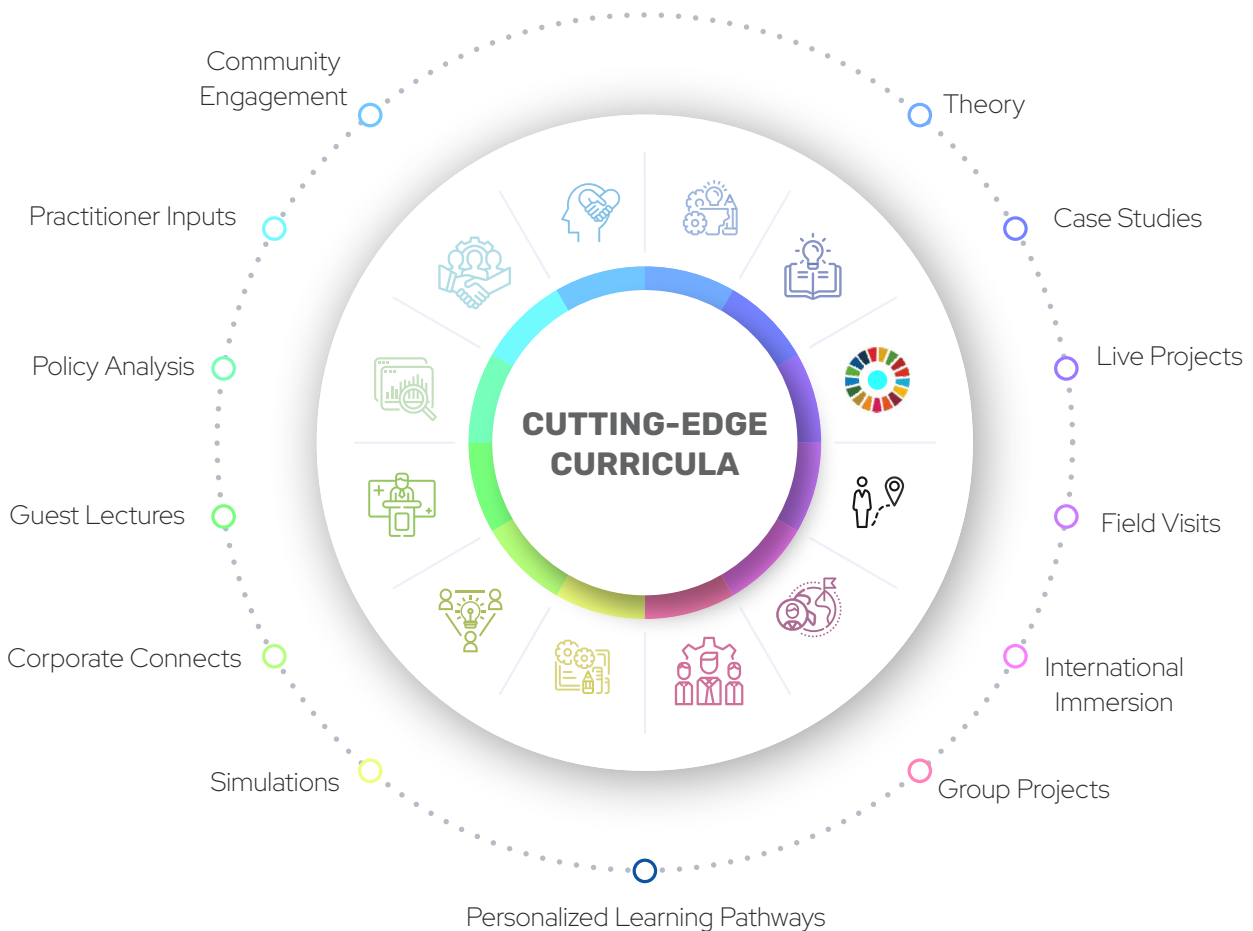


# MASTER OF BUSINESS ADMINISTRATION (MBA)

CUTTING-EDGE TAPMI MBA ADVANTAGE TO BOOST CAREERS

The Mission of TAPMI's flagship MBA – Master of Business Administration Program is “Leadership through Value-Creation”. We nurture versatile leaders with a spectrum of capabilities and a cross-functional mindset. Highlights of the program are:

- Program is spread over two years with Six trimesters
- **Year 1:** Core courses in the areas of Strategy, Marketing, Operations, Human Resources, Accounting, Finance, Economics, Information Systems and Analytics.
- **Year 2:** Contemporary and Industry relevant Elective courses leading to various specializations.
- Focus on Values, Ethics & Leadership.
- Experiential learning
- 8 week-long summer internships with premier organizations across the country





# TAPMI

(A constituent unit of MAHE, Manipal)



# MBA – BKFS

PIONEERING NICHE COURSE FOR FINANCE ENTHUSIASTS

TAPMI's MBA-BKFS program focuses on "Value-Creation through Financial Analysis". Aided by the state-of-the-art TAPMI Finance Lab, this course enables students to have a managerial career in the fields of banking and financial services with leading national and multinational banks and financial institutions.

- Two-year MBA course with a focus on Banking and Capital Markets, catering to banking and financial services industry.
- Career paths in Investment and Corporate Banking, Stock Broking, Financial Analyst, Treasury Operations, Asset Managers, Credit Rating Analyst, roles with exchanges/ regulators, etc.
- Courses across both years are integrated with Bloomberg terminals.
- Experiential learning through a one-of-a-kind course in India, Student Managed Investment Course (SMIC).
- Coursework aligned with the Candidate Body of Knowledge (CBoK) of CFA/FRM Programs'.
- Scholarships offered for pursuing CFA/FRM programs.
- Three-week on the job training with Bombay Stock Exchange or the State Bank of India training institute after 8-week long summer internship.



**BKFS Students –  
CFA/FRM Examinations  
Qualified**



Prasanna Venkatesh Nagarajan  
Cleared FRM Level 1



Piyush Shashikant Bhandare  
Cleared CFA Level 1



Sheikh Yajidul Islam  
Cleared FRM Level 1



Tejas M P  
Cleared CFA Level 1



# MBA – HRM

LEARNING PEOPLE MANAGEMENT FROM THE BEST



With a mission of creating value through people, the program is focused on delivering a comprehensive course curriculum in human resources to build exceptional behavioral (individual, team and leadership), functional, strategic and institutional (employee relations and industrial relations) HR competencies which empowers participants to become strategic partners for business.

- Two-year MBA program focusses on creating thought leaders in human resources who can effectively manage people and organizations for high performance.
- Experiential learning is effectively cultivated through a series of HRM specific certification workshops in Total Rewards Management, Competency Mapping, Design Thinking for HR Professionals, Tax

Management, Coaching, and Diversity, Equality & Inclusion, all of which prepare students to meet the demands of their professional environments.

- Graduates of this Program will be adept in leadership and navigation, business acumen and consultation, global/ national and cultural relationship management, technical competencies and HR functional skills
- Elementary courses in year 1 including Finance and Economics, Marketing, Operations Management, and Information System Management.
- Core-courses in human resource management in year 2, advance courses in Labor Laws, Analytics, Organizational Development, HR Consulting and AI & ML for HR



# TAPMI

(A constituent unit of MAHE, Manipal)



# MBA – IB

GLOBAL EXPOSURE FOR YOUR DREAM INTERNATIONAL CAREER

General Management mastery with international business effectiveness

- Mastery of the International Business domain with enhanced functional skills in cross country contexts, global uncertainty and globalisation
- Critical thinking skills, international negotiation ability, cross cultural literacy and geo-political awareness
- International Live Project Management and real-time advisory in collaboration with xCulture.org\*
- International Immersion and study abroad option at leading business schools overseas\*
- Effective corporate communication via foreign training, based on Goethe Institute and Alliance Francaise curriculum and pedagogy and advanced business English proficiency\*
- Alignment with GARP Sustainability body of knowledge, with certification (optional)\*
- Adaptive leadership via outbound training in collaboration with TATA STEEL ADVENTURE FOUNDATION, cross cultural sensitivity and Young Global Leadership (YLP) Program (to be piloted)\*

\*Subject to curriculum revision for the 2025 – 2027 Batch





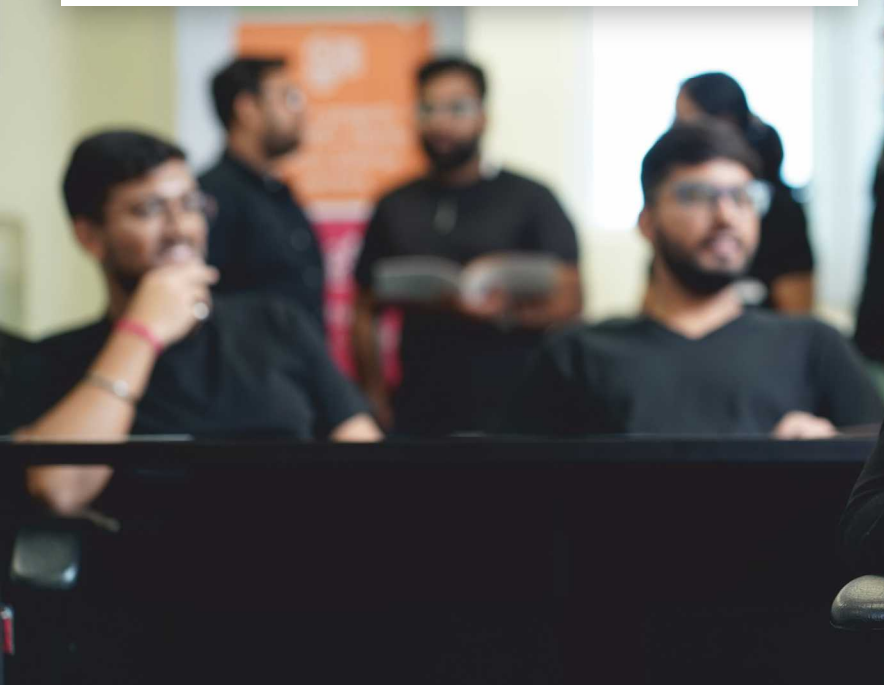
# MBA – MARKETING

CREATING FUTURE LEADERS IN A DYNAMIC MARKETING WORLD

The MBA-Marketing Program provides foundational training in various management disciplines with specialized expertise in the functional area of Marketing. The program has received “Accredited degree” status from the Chartered Institute of Marketing (CIM), UK and Australian Marketing Institute (AMI).

The program aims to empower professionals to lead in the domain of marketing, sales, and customer service across various sectors of the economy.

- BrandScan course which gives an opportunity to analyze actual business challenges through research and provide solutions to organizations
- Live projects in addition to summer internship that provides the necessary industry exposure to students
- Mentoring by TAPMI alumni holding senior leadership positions
- Workshops delivered by industry professionals
- Successful track record of attracting companies in FMCG, durables, retail, banking, and B2B sectors offering sales management, Product Management, retailing roles for final placements



**TAPMI***(A constituent unit of MAHE, Manipal)*

# MBA - TECHNOLOGY MANAGEMENT

EMBRACING TECHNOLOGY, ENHANCING BUSINESS



## Introduction

TAPMI Bengaluru, a constituent unit of Manipal Academy of Higher Education (MAHE), an Institution of Eminence, is located at the esteemed MAHE Bengaluru campus. As a sister concern of the renowned T.A. Pai Management Institute, TAPMI Bengaluru, extends the four-decade legacy of TAPMI's outstanding institutional culture, excellent career support, and holistic learning experience continues to be extended.

TAPMI is one among the 5% of the top business schools worldwide to have been accredited with the illustrious AACSB and a participant in PRME, with a commitment to advancing values such as sustainability, responsibility, and ethics in teaching, research and thought leadership.

## MBA-Technology Management

The MBA in Technology Management is designed to prepare future leaders for the evolving business world where technology plays a crucial role. This program is based on Business Management, Technology Management and Sectoral Specialization, ensuring that students develop a comprehensive understanding of both business fundamentals and the latest technological trends.

### USPs:

1. Instruction by Industry Practitioners: 30% instructions in Technology and Industry Vertical courses are delivered by seasoned professionals.

2. Personalized Focus: With individualized mentoring, the program ensures a tailored learning experience that helps students achieve their unique career aspirations.
3. Software-Driven Instructions: Learning using industry leading software tools in each course.
4. Leadership Assessment and Development Center: A dedicated center for leadership assessment and development, helping students identify and refine their managerial and decision-making abilities.
5. Immersive Live Projects: Multiple live project internships for students with leading technology companies.
6. Industry Mentor Programs: Students benefit from formal mentorship program with experienced industry professionals who provide career guidance, insights into emerging trends, and support in navigating professional challenges.
7. Technology labs:
  - Finance Research Lab
  - Analytics Lab
  - Supply Chain and E-Commerce Lab
  - AI/ML Lab

Specializations: Fintech, Healthcare Technologies, Retail & E-Commerce



# MBA- AI AND DATA SCIENCE

BLENDING THE PRINCIPLES OF BUSINESS AND TECH!

## A. Program's Need

Artificial Intelligence (AI) and Decision Science (DS) are becoming increasingly popular among organizations right now as a result of the widespread use of AI and DS across all sectors in order to maintain their competitive edge. In this rapidly evolving technological landscape of information systems, particularly artificial intelligence and decision science, organizations are increasingly exploring the possibility of transforming their solutions with the help of AI and DS. As a result of the severe rivalry, businesses are becoming more experimental with artificial intelligence and decision science, as well as accepting larger levels of risk. Additionally, this is driving differentiation for organizations across the globe.

## B. MBA in Artificial Intelligence and Decision Science

A Master of Business Administration (MBA) in Artificial Intelligence (AI) and Decision Science (DS) is a specialized business program that is meant to provide students with the information and abilities necessary to navigate the fast-changing business landscape, where AI and DS play a crucial role. The graduates of this program will be able to successfully traverse the business landscape. The traditional education in business management is combined with advanced training in artificial intelligence, machine learning, data analytics, and pertinent decision-making frameworks in program.

TAPMI and the Manipal School of Information Science (MSIS) are jointly launching a new MBA program in Artificial Intelligence (AI) and Decision Science (DS). The duration of the program is 2 – years, having six terms.

## Unique Curriculum – Five Dimensions

### ➤ Business Management

Multi-disciplinary courses consisting of Marketing, Finance, HR, Strategy, and Operations

### ➤ Artificial Intelligence (AI) and Data Science (DS)

Design and implementation of AI and DS models or platforms, implementation and selling of AI and DS solutions

### ➤ Summer Internship Projects

Summer internships in companies among different business verticals in term four

### ➤ Capstone Projects

Research based project across various business domains in terms third and fourth

### ➤ Industry Projects

Immersion in industry with real project in terms five and six

## Distinctive Features

- Program design that emphasizes Artificial Intelligence and Decision Science, an experiential and sectoral learning





# TAPMI

(A constituent unit of MAHE, Manipal)



- Two MAHE schools provide instruction – TAPMI and the Manipal School of Information Science (MSIS)
- Instruction by seasoned industry practitioners
- Instruction with technology and/or product and/or service aids, applied learning, and technology labs
- Methodologies – Prescriptive, Predictive, Descriptive Analytics, and Inferential Statistics
- Coverage – Python, R, Power BI, Tableau, JASP, Orange, MongoDB, MySQL, Oracle, Amazon Web Services, Microsoft Azure, Google Cloud Platform, Apache Ecosystem Components, Microsoft Office 365, Social Media Analytics Tools and Several Others
- Industry projects
- Research projects
- Summer internship projects

## Who Can Attend?

- Bachelors in any discipline
- Minimum, 2–3 years' experience
- Experience in or demonstrate passion for AI and/or DS

## Why Join This Program?

- Courses delivered by two schools – TAPMI and the Manipal School of Information Science (MSIS), and Experienced Industry Professionals
- Instruction using technology aids and multiple labs
- Applied learning using business and/or technology case studies, internships, and multifarious projects
- Analytics and other labs to harness multiple tools for effective business management in this contemporary digital era





# PLACEMENTS AND CORPORATE ENGAGEMENT AT TAPMI







TAPMI

(A constituent unit of MAHE, Manipal)



# TAPMI PLACEMENTS

Excellent Placement Record year-on-year

## Key Corporate Engagement programs

- Individual career planning and counselling for all students
- 2 month intensive Summer internships leading to over 28% PPOs in 2023-24
- Live projects with industry and faculty guides
- Disha: Annual workshop with CFO/CEO/Company Lead level interactions from over 146 guests from 139 companies(2023)
- Advisory Boards to create curriculum based on industry trends
- Sponsored Competition Participation for personal growth
- Sectoral and industry-specific Workshops
- Industry immersion workshops
- Co-delivery of electives by Industry experts
- 7000+ Alumni Connect





# PLACEMENT 2024-25\*

\*in progress



## Highest Package Program wise



**TAPMI***(A constituent unit of MAHE, Manipal)*

## PRE-PLACEMENT OFFER HIGHLIGHTS



2022-23

2023-24

2024-25\*

Number of PPOs

136

112

83

Percentage students receiving PPO

28%

22%

16.70%

Highest Stipend (in Lakhs)

1.25L

1.50L

2.00L

## GENDER BASED BREAKUP OF PRE PLACEMENT OFFERS

2022-23

2023-24

2024-25\*

Male

78

62

37

Female

58

50

46



## PPO BASED ON EXPERIENCE

2022-23

2023-24

2024-25

Fresher

33

34

36

Students with  
work experience

103

78

47

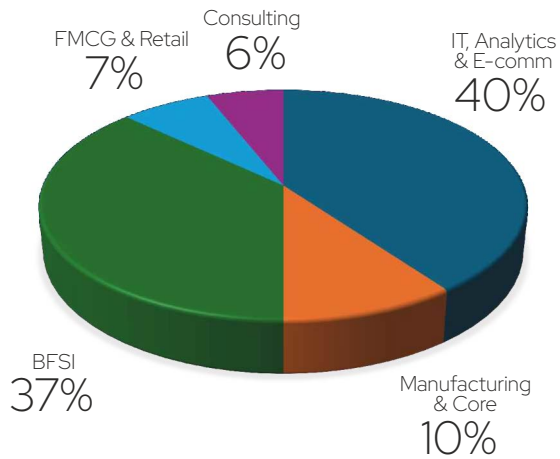


\*The placement process for 2024-25 is in-progress.

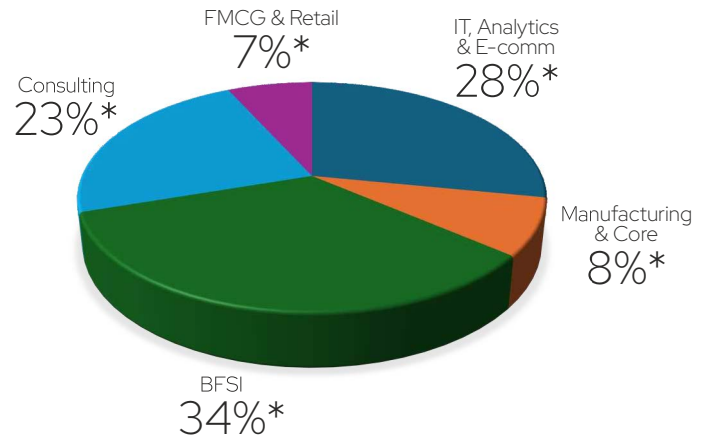


## PROMINENT SECTORS FOR PLACEMENT

2023-24



2024-25



## HIGHEST CTC - LAST TWO YEARS

2023-24

32.03 LPA

2024-25

32.77 LPA

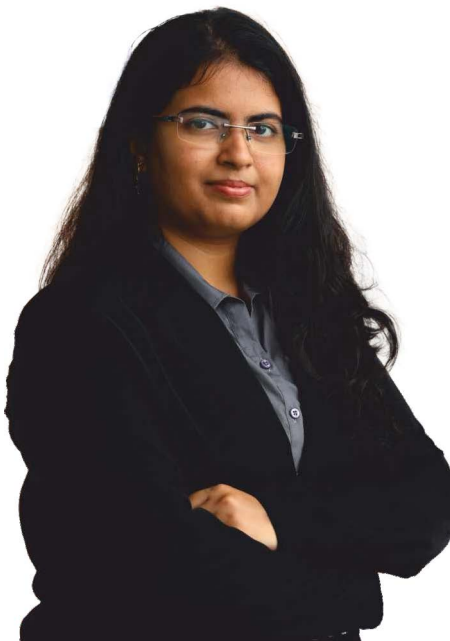


## PACKAGE DETAILS

PLACEMENT	2023-24	2024-25*
Top 50	20.64	19.16
Top 100	18.45	17.65
Top 150	17.25	16.72
Top 200	16.37	16.02

in Lakhs

\*The placement process for 2024-25 is in-progress.





# TAPMI

(A constituent unit of MAHE, Manipal)



## KEY SECTORS

- Automotive, Aviation And Aerospace
- BFSI
- Consulting
- Consumer Banking
- EdTech
- FMCG, Retail & E-commerce
- Healthcare
- Hospitality And Real Estate
- IT & Analytics
- Mobilization-operations
- Organization Development & Transformation
- Supply Chain, Logistics And Transportation







# KEY PROFILES

- Analyst (Financial Operations)
- Area Business Manager
- Area Manager
- Area Sales Manager
- CFO Associate
- Commercial Banking Credit Risk
- Consultant/principal - Digital
- Cyber Risk Consultant
- Digital Commerce Consultant
- Finance Associate
- Finance Consultant
- Financial Analyst
- Financial Consultant
- Global Finance Business Analyst
- Hr Assistant Manager
- Industry Research Management Trainee
- Innovation Consultant
- Investment Analyst
- Investment Banking - Analytics
- Management Consultant
- Management Trainee
- Manager - Credit
- Manager - Finance & Accounts
- Manufacturing Analyst
- Marketing Specialist
- Pre-sales Consultant
- Product Management
- Product Manager
- Program/product Manager - ERP/SAAS
- Project Manager
- Regulatory & Legal Support Advisor
- Risk & Compliance
- Sales Executive Trainee
- Sales Strategy Consultant
- Senior Analyst
- Senior Management Consultant
- Senior Manager (Brand & Collaborations)
- Strategy And Transactions Consultant
- Talent Acquisition Consultant
- Tech Risk Consultant



# TAPMI

(A constituent unit of MAHE, Manipal)



# TOP RECRUITERS

 Optimizing supply chains	 ABInBev	 accenture ATCI	 accenture TC	 adani	 ecosystems of efficiency	 Agro Tech Foods Limited
 airtel Payments Bank	 ALSTOM	 anakin	 Arcesium	 ATHER	 AXIS BANK	 Berger
 BLUESTONE	 Capgemini	 HEALTH INSURANCE	 CARE Ratings	 CENTURYPLY	 Improving lives, every day	 citi
 COFFEE DAY BEVERAGES	 Cogitate	 cognizant	 COMMSCOPE	 An S&P Global Company	 D&P ADVISORY	 DE Shaw & Co
 DARASHAW ALL ABOUT FRUIT	 DECATHLON	 DELL	 Deloitte	 DEZERV	 digit	 E2E RAIL
 Building a better working world	 YOUR PERFECT BANKING PARTNER	 General Mills	 genY medium	 GEP	 GODREJ & BOYCE	 GODREJ PROPERTIES
 Grant Thornton	 grayQuest	 HCL	 HDFC Life	 Hero	 HEXWARE	 SINCE 1930
 HINDUJA LEYLAND FINANCE	 We'll take you home	 HSBC	 ICICI Bank	 S&P RATED - AAA ACQUISITION CREDIT RATING AGENCY	 Infosys	 IntelliPaat
 ITI Limited	 JPMORGAN CHASE & CO.	 JLL	 K2	 KANTAR	 Offline Craft, Redefined	 kotak, Mahindra Bank
 KPMG	 LARSEN & TOUBRO	 Lampros tech	 India's First Flexi-Retail Company	 LOWE'S	 LUMBER	 Creating a legacy with better education
 make my trip	 manipalglobal education services	 LIFE'S ON	 MFI Manipay Payment and Identity Solutions	 Manipal Technologies Limited	 Mercedes-Benz	 MichaelPage
 MOSSADAMS	 NAVIKENZ	 NORTHSTAR	 OPTIV	 P&G Health	 A NEW BEGINNING	 PEOPLE BUSINESS
 Piramal	 DELIVERING EXCELLENCE	 Prodapt	 pwc	 Refyne	 Schneider Electric	 Global precious logistics
 Splash	 TATA CAPITAL	 TE connectivity	 Tech Mahindra	 tenovia	 The Hackett Group	 Catalyzing Your Impact
 TVSCREDIT	 TVS Emerald	 U S T	 VEEFIN	 virtusa	 vivriti CAPITAL	 wakefit
 WELLS FARGO	 whatfix	 WRITER	 XQtiv	 ZE		





TAPMI ALUMNI





# TAPMI

(A constituent unit of MAHE, Manipal)



DR. T.M.A. PAI BLOCK





# TAPMI ALUMNI

## Creating Life Long Bonds

Alumni Relations Committee (ARC) of TAPMI with a mission to "Connect, Bond, Network" acts as a bridge between the alumni and the Institute. TAPMI has a network of 7000+ alumni across the globe who have been making the institute proud of their achievements. ARC aims to maintain close ties with the alumni of TAPMI and to promote interaction between alumni and the institute. Various events like alumni meets, initiatives, alumni mentorship, social media campaigns

and webinars are held in order to strengthen the relationship between the alumni, students, faculty members and staff. Additionally, ARC makes sure that all our alumni get to know about the job opportunities through the Portal available in the industry. By engaging alumni, we wish to enhance the network, involvement, and support TAPMI, while providing a mutually beneficial relationship. We solidify the connection between TAPMI's past, present, and future.

### HIGHLIGHTS

#### GLOBAL NETWORK OF ALUMNI



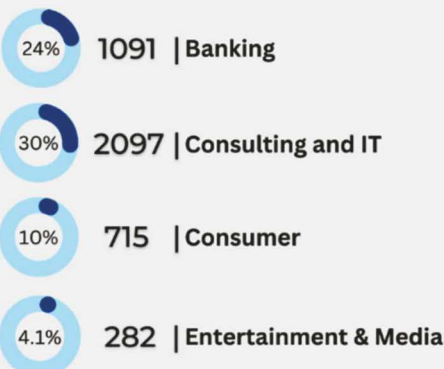
#### ENTREPRENEURS



#### C-SUITE & BOARD



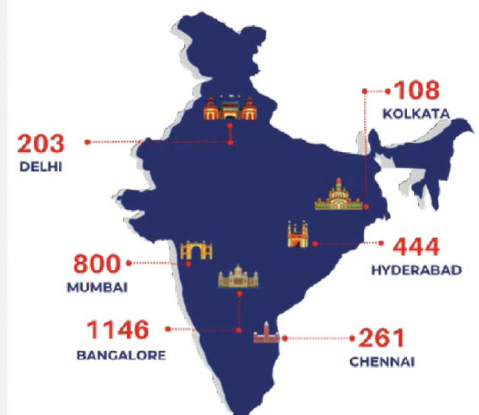
#### SECTOR DIVERSITY OF ALUMNI



#### TOP EMPLOYERS



#### ALUMNI ACROSS METROCITY



**TAPMI**(A constituent unit of MAHE, Manipal)

# ARC ALUMNI TESTIMONIALS



## Nikhil Sharma

1999 – Food & Beverage Services – Perfetti Van Melle – Managing Director

*"I have the fondest memories of being at TAPMI! It was a small batch, and we were all thrown together into the a cauldron of classes, quizzes and deadlines for assignments! For all those times, I am grateful to my teachers and friends who coached and helped me along the way!*

*Since the time we have graduated, it's been fabulous to see the institute do so well and touch new heights. The fact that many of the alumni are doing so well is testament to the quality of the learning and the atmosphere in which it is imparted at TAPMI.*

*Wishing much success for the future!"*



## Jerry Vaidyan

2002 – Human Resources – L&T Hydrocarbon Engineering Limited – Head-HR Operations

*"My time at TAPMI ranks unchallenged as the best years of my life. What TAPMI does to you is – it transforms your outlook altogether. Your frames of reference are constantly challenged by the eustress of academic rigour, the mind-bending intellectual rigour of events like Brandskan and the real world application rigour of industry interface initiatives like Management in Practice. Add to this a multitude of self-organizing, self-leading Student Committees held to extreme levels of accountability by the committee members themselves, and you get an institution that you are proud to be a part of. The Director, Faculty and Staff are always there for you, every step of the way. And you get to match wits with batch mates as accomplished as yourself and make some amazing friends. I have TAPMI to thank for everything I have achieved in my career. So will you and I wish you all the very best."*



## Shah Sushil J

2003 – BIFS – HSBC – Head-Non Financial Risk

*"TAPMI shattered my pre-set notion about how one goes about learning and up-skilling. Through every second, every initiative, each intervention of the PGP Program on Campus – the institute had only one Goal – subconsciously prepare the students for the real tough Organisations. In less than a month of joining, we realized that we were operating in a large university and were learning not only from the school but also from almost every other fellow batchmate. It is here I realized that true leaders are not entirely sculpted in the classroom, but a significant portion of it happens outside of it.*

*Coming from a City (4th tier in India) with Zero exposure to Corporate World, to making my presence meaningfully felt in the boardroom of HSBC India HQ has been quite a journey and I won't bat an eyelid before crediting most portion of that success to the turnaround in my personality that happened at TAPMI!"*





## Sumeet Minocha

1999 – Consulting Accenture – Managing Director

*“Tapmi gave me strong conceptual knowledge, and learning by doing projects like Management in Practice (MIP) and Brandscan. We had a phenomenal library, inspirational faculty, and above all, a visionary director. Tapmi was ranked among the top 11 MBA institutes when our batch joined in 1997.*

*Despite the tough placement scenario of 1999, our batch had 100% placements. Thanks to the institution, which was named after the visionary and legendary T. A. Pai. Tapmi gave me great friends and intellectual discussions to stimulate our thinking. Learning from peers has always been key in Tapmi. The learning tradition continues as we have a strong bond in our batch, Tapmi 99. Privileged to be part of a larger group called the Tapmi family.”*



## Suresh Uppalapati

1998 – Managing Director, Global Services Delivery – JAPAC, Google Cloud

*“My two years at TAPMI was more than just an academic experience. It was a transformative journey that pushed me beyond my comfort zone, equipped me with the skills to handle pressure and think on my feet like never before.*

*The relationships I built with faculty, classmates, and industry leaders continue to inspire me. A lot of what I have been able to achieve professionally is thanks to the strong grounding and platform that TAPMI provided.”*



## Mohit Manochati

(TAPMI Batch 2000–2002), Head Of Cash Management Sales– Middle East and Africa, BNP Paribas, Dubai, UAE

*“The learning and launch platform at TAPMI has been instrumental in my professional journey and career growth. The resources, mentorship, and the strong alumni network have provided invaluable support, making me feel like I’m part of a bigger family that’s always there and genuinely cares about you”*



# ADMISSIONS AT TAPMI









**TAPMI***(A constituent unit of MAHE, Manipal)*

# ADMISSION PROCESS

The Admission Process provided below explains the common processes followed across all Programs.

- Each MBA Program may have additional components for selection based on its specific requirements.

## Minimum Eligibility

A Graduate Degree from a recognized University with not less than 50% marks

(Final year students may also apply. However, the admission shall be cancelled if they obtain less than 50% in their graduation).

Specific eligibility for MBA Technology Management

- Minimum two years of work experience is preferred
- Should be able to demonstrate interest in technology domain in the technology interview round &
- Should be interested in pursuing a career in technology domain.

## Specific eligibility for MBA Artificial Intelligence and Data Science

- Minimum two years of work experience is preferred
- Should be able to demonstrate interest in AI and data science domain
- Should be interested in pursuing a career in AI and data science domain.

**The Admission Process provided below explains the common process followed across all Programs.**

- Each MBA Program may have additional components for selection based on its specific requirements.
- Shortlist and Merit list for each Program is separate and independent of each other.
- Shortlist/Selection in one Program does not guarantee shortlist/selection for the other Program (for candidates who apply to multiple programs).

## Stage I: Shortlisting

Applicants will be shortlisted based on valid

- CAT (Common Admission Test) 2024

- Shortlist and Merit list for each Program is separate and independent of each other. Shortlist/Selection in one Program does not guarantee shortlist/selection for the other Program (for candidates who apply to more than one program).

- XAT (Xavier Aptitude Test) 2025

- GMAT (Graduate Management Admission Test) January 1, 2020- January 31, 2025

- NMAT by GMAC™ 2024 scores, whichever is higher.

(Applicants can submit more than one test score)

Apart from high test score, TAPMI considers the overall profile of candidates. For example, academic profile (10th, 12th, Graduation marks), work experience, extra-curricular achievements, achievements in sports, contribution to social activities, entrepreneurial spirit, diversity, leadership potential, integrity and values. The entrance examination cut-off may vary slightly each year across programs, depending upon the profile of applicants and the suitability of the profile to specific program(s).

Students shall be informed about the shortlist decision on their registered email address.

## Stage II: Admission Process (WAT-GD-PI)

The stage II of TAPMI admission process consists of Written Ability Test (WAT), Group Discussion (GD) and Personal Interview (PI).

\*TAPMI makes suitable changes every year in the GD/PI process to select bright and deserving candidates. Shortlisted candidates will be informed about changes for 2025-27 admission process, if any.





## Final Selection

The final selection of the candidate is based on the following:

Category	% Weightage
Score in Entrance Test (CAT, XAT, GMAT, NMAT)	30
Score for academic performance (in X, XII, Graduation Degree)	15
Group Discussion/Personal Interview	50
Weightage for Gender Diversity & Extra-curricular Activities	05
Total	100

\*As per the AICTE APH 23-24, subject to change

## Admission Process – NRI / NRI Sponsored Eligibility Criteria

TAPMI also accepts applications from NRI/NRI Sponsored Candidates/ Foreign Nationals/ Overseas Citizenship of India (OCI) category candidates for specific programs (only). (Please contact Admissions Office for more details):

### Person of Indian Origin (PIO)

Shall mean the persons who are citizens of other countries (except Pakistan and Bangladesh) who at any time held an Indian passport, or who or either of his/her parents or any of his/her grandparents was a citizen of India by virtue of the provisions of the Constitution of India or Sec2(b) of Citizenship Act 1955.

### Foreign Nationals

Shall mean the citizens of all countries other than India, who are not of Indian origin as defined under PIO.

### Minimum Eligibility

A Graduate Degree from a recognized University with not less than 50% marks (Final year students may also apply. However, the admission shall be cancelled if they obtain less than 50% in their graduation).

### Valid Entrance Exam scores

NRI Candidates: CAT / XAT / GMAT / NMAT / ATMA /

CMAT / MAT

PIO / Foreign Nationals: GMAT (compulsory) and IELTS (if required).

## Stage I: Shortlisting

For NRI / PIO candidates, TAPMI follows profile-based shortlisting. Profile considered for shortlisting consists of valid entrance exam scores, academic profile, work experience (type of company, total experience, etc.), extra-curricular achievements, if any.

Students will be informed on the shortlist decision through email to their registered email id.

## Stage II: Admissions Process

Same as that for Indian Domicile category

### Note

1. TAPMI does not accept application in hardcopy mode. All applications must be submitted online.
2. The above procedure may be changed depending on the developments that may arise.
3. Any disputes regarding the admissions to these programs are subject to the jurisdiction of Udupi only.
4. The application fee is non-refundable.
5. TAPMI uses CAT/XAT/GMAT/NMAT by GMAC™ scores for shortlisting the candidates. IIMs, XLRI and GMAC have no role either in the selection process or in the conduct of the program.
6. There is no "Management Quota" at TAPMI.



**TAPMI***(A constituent unit of MAHE, Manipal)*

# APPLICATION FEE

Application Fee (Non-refundable)

Application Fee(Non-refundable)	
Programs Applying for Application Fee	
SINGLE Program	₹ 2,000
TWO Programs	₹ 2,750
THREE Programs	₹ 3,500
FOUR Programs	₹ 4,250
FIVE Programs	₹ 4,500
SIX Programs	₹ 4,750
SEVEN Programs	₹ 5,000

Last date for submission of online application is December 28, 2025.

## Important dates

The important dates for TAPMI Admission Process for batch 2025-27:

Application Fee (Non-refundable)	
Activity	Date
TAPMI Admission Application Commencement	19th November, 2024
TAPMI Admission Application Close	28th December, 2024
TAPMI Admissions Final Selection First List Announcement	10th April, 2025 (Tentative)
Commencement of MBA First Year Term I	June/July, 2025 (Tentative)

## Admissions Schedule

Group Discussion and Personal Interviews will be conducted in February- March 2025. Please keep visiting the website for regular updates

## Centres for GD/WAT/PI

Bengaluru, Chennai, Hyderabad, Mumbai, Kolkata, New Delhi, and Manipal.

Month	Dates
February 2025	15 <sup>th</sup> , 22 <sup>nd</sup> – 28 <sup>th</sup>
March 2025	01 <sup>st</sup> – 12 <sup>th</sup>

## Program Fees

Tuition fee – For Indian Domicile:

Program	Tuition Fees (per year)
MBA	₹ 9,00,000
MBA-BKFS	₹ 9,00,000
MBA-HRM	₹ 9,00,000
MBA-IB	₹ 9,00,000
MBA-Marketing	₹ 9,00,000
MBA-Tech	₹ 9,00,000
MBA-AI&DS	₹ 9,00,000

For NRI : 20,000 USD per year

Alumni Lifetime Membership fee – ₹ 20,000

Caution deposit (Refundable) – ₹ 40,000

Training Cost at SBI and BSE (only for students enrolled in MBA – BKFS Program) – ₹ 60,000

## Education Loan Support:

TAPMI has associated with several banks to ensure quick financial assistance for students interested in availing educational loans. Please get in touch with the TAPMI Admissions team for further information and support.

## Admissions Office Coordinates

Contact: 0820 270 1010/ 1070/ 1080/1090

Mobile: 9482701000

Email: admissions.tapmi@manipal.edu

Please refer to the brochure & website for details/updates.



# SCHOLARSHIPS & AWARDS

TAPMI offers scholarships of more than 6 crores across all its MBA programs at Manipal and Bengaluru campuses under the following categories

- **Dr Ramdas M. Pai Scholarship for Excellence in Academics and Practice**
- **Dr Ramdas M. Pai Scholarship for Economically Weaker Section Students**
- **Dr Ramdas M. Pai Scholarship for Achievers**
- **Dr Ramdas M. Pai Future Innovators Scholarships**

The scholarships embody the profound commitment to empowering students and fostering an inclusive approach to education.

TAPMI also provides Academic Merit Awards and Other Scholarships including Dean's Roll of Honour, YLP Stipend, and CFA/ FRM/ CMT Scholarships etc\*

\*for more details visit the website







TAPMI

(A constituent unit of MAHE, Manipal)





# LIFE AT TAPMI







# TAPMI

(A constituent unit of MAHE, Manipal)



# INFRASTRUCTURE

World-class infrastructure to facilitate learning



- Fully equipped 100 seater library
- Classrooms fitted with AC, smart boards, dual projectors, audio-visual facilities and high-speed internet
- Residential facilities of twin-sharing basis with AC and individual washrooms for every room
- Hostels with Lifts, power back-up, WiFi and 6 common rooms for games and relaxation
- Excellent house keeping staff to keep the campus spotlessly clean
- Surrounded by 44 acres of lush greenery and peace
- Well equipped gym facilities for the fitness enthusiasts
- Campus store and hair salon facilities
- Ambulance facility available in the campus and direct connect to the Kasturba Hospital for emergencies
- Well-lit, spacious and green campus with running paths, broad walkways, garden seating and lounges for enjoyment, group work and assignments!
- Student centre and canteens with multiple food vendors providing variety of cuisines
- Night canteens for coffee and conversations



# CAMPUS LIFE

A home away from home

- Make friendships for life
- Relax in movie screenings with classmates
- Have endless cups of coffee and refreshments in the night canteen
- Go bird watching and participate in the riders and bikers' group
- Excite the sportsperson in you with state-of-the-art basketballs, football, cricket and badminton courts for rejuvenation after a day of classes and assignments
- Celebrate all festivals such as Ganesh Chaturthi, Durga Puja, Holi, Diwali, Gurupurab, Christmas, Halloween, etc
- Enjoy Onam and Garba with local food, local dress and friends
- Join and learn from over 30 student teams such as photography, dance, music, cooking to explore the creative, competitive and event managing side of you!
- Croon to Yet-To-Be-Named (YTBN), TAPMI's very own band!
- Ragging is completely banned. Anyone found guilty of ragging and /or abetting ragging is liable to be punished.





# TAPMI

(A constituent unit of MAHE, Manipal)



## LIFE@MANIPAL



Global cuisines such as Italian, Asian, Arabic, Indian, Chinese and Mexican options

2 multiplexes and multiple shopping opportunities



Well connected Manipal Town



- TAPMI, Manipal is in the Udupi district of Karnataka, approximately 70 km north of Mangalore on NH 66.
- Manipal is known for its high-class institutions of Medicine, Engineering, Dental, Hotel Management, Law and Pharmacy. It is easily accessible by road from Mangalore and Bangalore, both of which are well connected by air and rail from all major cities in India.
- The closest airport is the Bajpe Airport, Mangalore. Daily flights are available from Mangalore to Bengaluru, Mumbai, Delhi, Chennai, Cochin, Hyderabad, and Kolkata.
- Cab services are available from Mangalore Airport to Manipal and it takes about 75 minutes to reach the Campus.
- Udupi is a major railway station on the Konkan Railway route connecting Mangalore to Mumbai.
- By road, Manipal is 8 hours away from the capital city Bengaluru and an hour-long journey by road from Mangalore on NH 66.
- Manipal has an excellent bus transport system. State-owned Volvo buses ply from Mangalore frequently, and KSRTC buses are available every night from Bengaluru.



30000 national and international student crowd



Pristine beaches and beach shacks to be explored



15 kms to Malpe Beach



LIFE@BENGALURU







# TAPMI

(A constituent unit of MAHE, Manipal)



# SUSTAINABILITY@TAPMI

Touching lives through sustainability

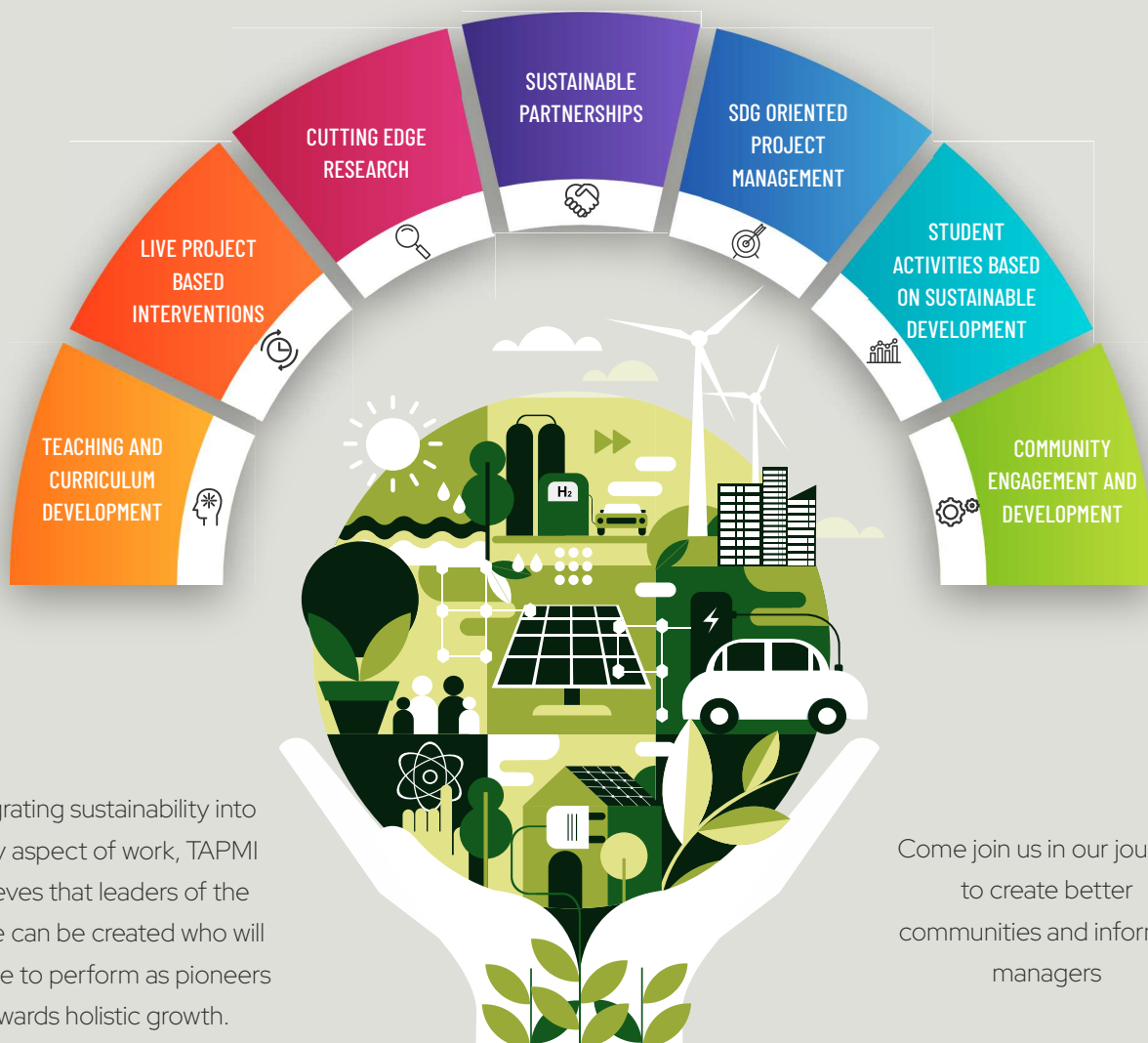
At the T A Pai Management Institute (TAPMI), we believe that imparting knowledge and skills to contribute towards sustainable development is an essential part of creating business leaders for tomorrow. TAPMI is committed to education for business excellence keeping tenets of sustainability in mind. People, planet and profit are central to our teaching at TAPMI and we believe in creating minds that are equipped to deal with the challenges of the future.

TAPMI looks at sustainable development in all aspects of its work, from student engagement, partner

engagement, management of our premises to cutting edge research in sustainable development.

Sustainability is a critical part of the TAPMI way of life. From research based on SDG goals, community engagement and participation in local development, curricula and live projects to projects and partners in the spheres of sustainability, we at TAPMI, have integrated sustainability into our processes.

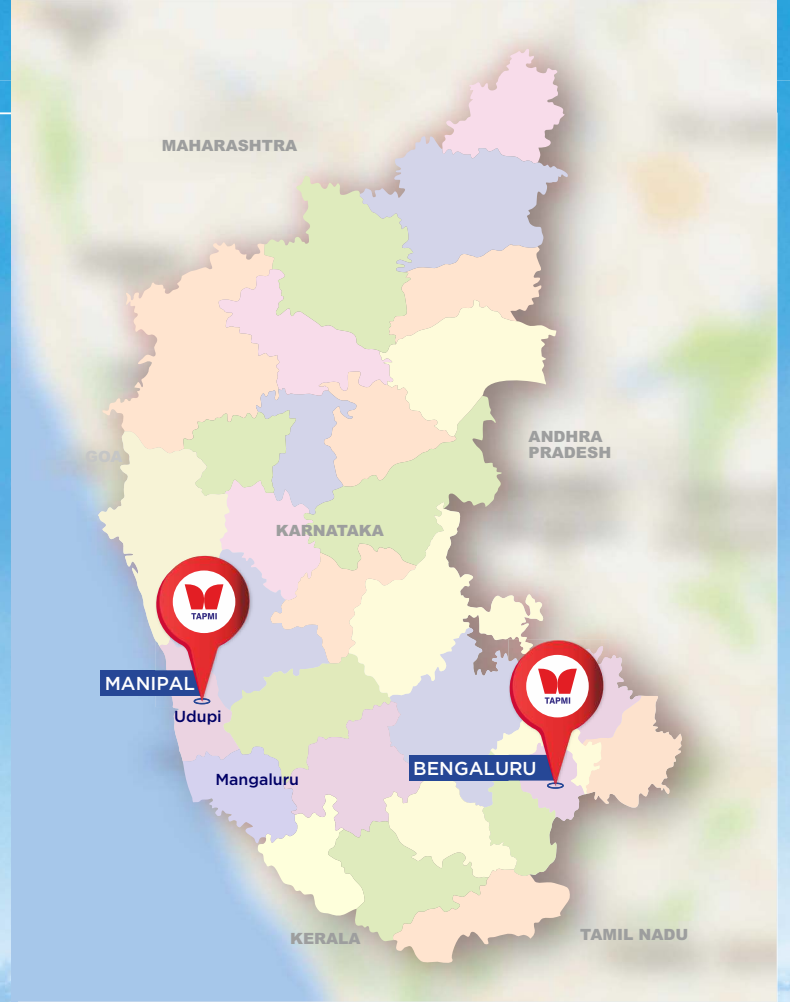
TAPMI's engagement with sustainability can be encapsulated into specific processes. These can be broadly classified into the following -



Integrating sustainability into every aspect of work, TAPMI believes that leaders of the future can be created who will be able to perform as pioneers towards holistic growth.

Come join us in our journey to create better communities and informed managers





WHERE  
LEARNING  
IS FOR LIFE

▲ Manipal



# TAPMI

*(A constituent unit of MAHE, Manipal)*



## **T A PAI MANAGEMENT INSTITUTE (TAPMI)**

A constituent unit of Manipal Academy of Higher Education (MAHE)



Post Box No.9, Manipal - 576 104, Karnataka.  
Ph: 0820-2701000 [tapmi@manipal.edu](mailto:tapmi@manipal.edu)

[www.tapmi.edu.in](http://www.tapmi.edu.in)  
[f](#) [t](#) [in](#) /mytapmi