

WHEN EDUCATION MEETS EXPERIENTIAL LEARNING

PROSPECTUS FOR ADMISSIONS MASTER OF BUSINESS ADMINISTRATION 2023-2025

T A Pai Management Institute
(A Constituent Unit of
Manipal Academy of Higher Education)



**WHERE LEARNING
IS FOR LIFE**

www.tapmi.edu.in



TAPMI

(A constituent unit of MAHE, Manipal)



TAPMI – WHERE LEARNING IS FOR LIFE

TAPMI'S MISSION STATEMENT



**To excel in post-graduate
management education,
research and practice.**



Excellence



Trust



Honesty



Innovation



Commitment



Student-centric

GIVE YOURSELVES THE TAPMI ADVANTAGE



Legacy of 42 years



7000+ alumni, of which one-fifth are currently leading at CXO levels.



World class accreditations - AMBA & AACSB



Ranked consistently amongst top B-Schools in India



Institute of Eminence, MAHE (Institute of Eminence)



Experiential Learning



Excellent Infrastructure with AC classrooms, hostels, and state-of-the-art educational facilities such as Bloomberg Labs



100% placement record year on year



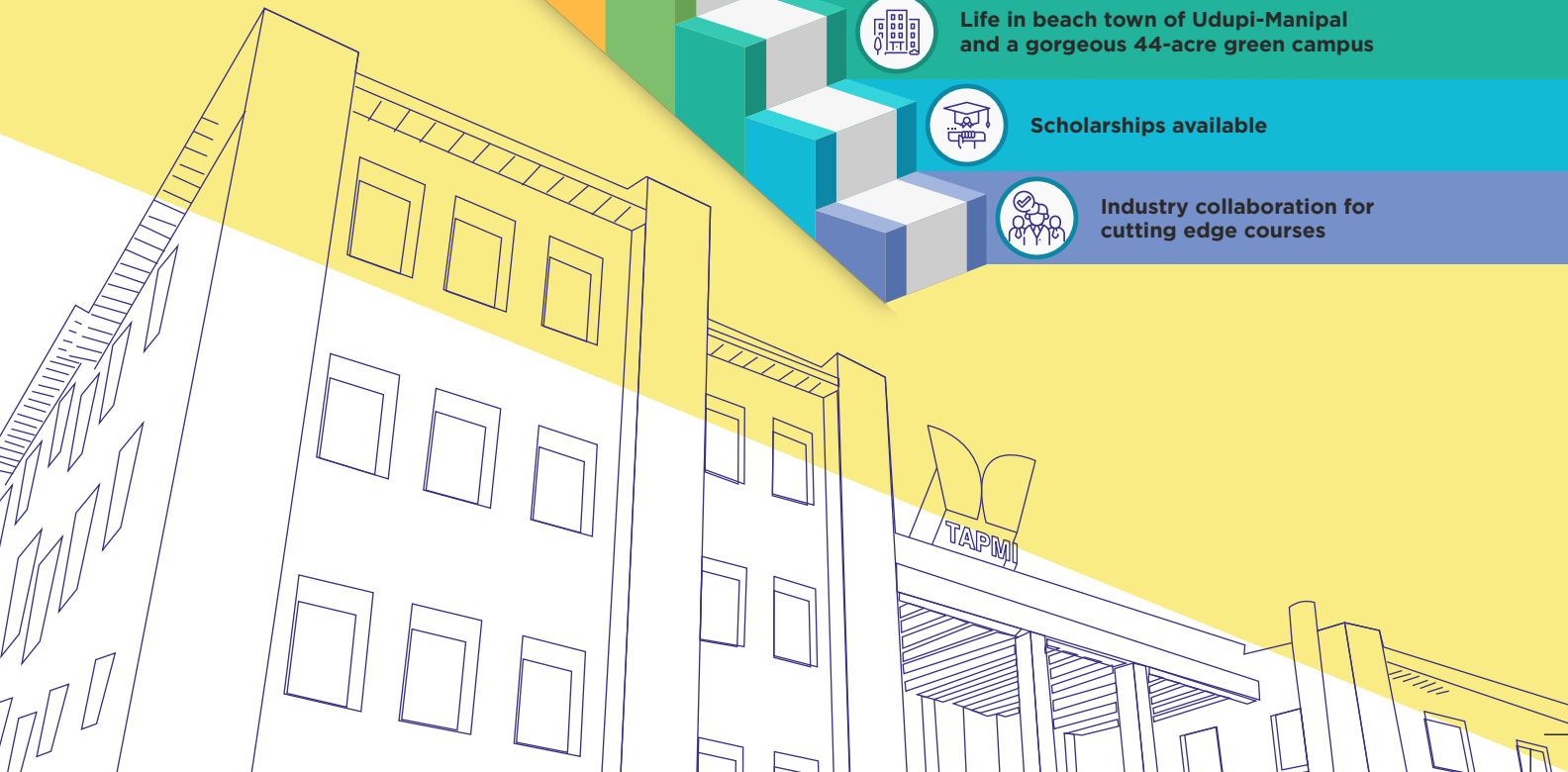
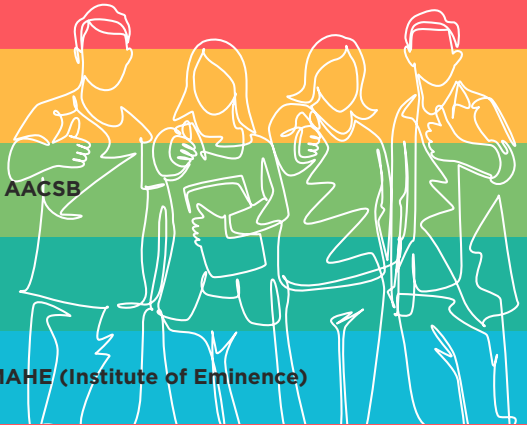
Life in beach town of Udupi-Manipal and a gorgeous 44-acre green campus



Scholarships available



Industry collaboration for cutting edge courses





TAPMI

(A constituent unit of MAHE, Manipal)



FOUNDER OF MANIPAL

Late Shri Dr. T M A Pai

Padma Shri Awardee

(1898 – 1979)



Born on 30th April 1898 at Kallianpur of Udupi District of Karnataka, Dr Tonse Madhav Ananth Pai was a self-made man who could understand the local problems, and his desire to serve the people motivated him to find ways and means commensurate with the conditions prevailing in those days. He had a great fascination for spreading education among youth from less privileged backgrounds in particular. He set up premier institutions such as the Kasturba Medical College Manipal in 1953 as the first non-missionary self-financing medical college in the private sector in India occupying the 29th place among the Medical Colleges started in India since 1835, created massive change and development in the educational circles. Continuing his thrust for providing higher education opportunities to the youth, he set up professional colleges of Engineering, Nursing, Pharmacy, and Dental Sciences at Manipal. He was keen to make the Manipal campus a university seat and presented the case to the state and the central Governments. Dr.T.M.A Pai was conferred the prestigious Padma Shri Award by the President of India in 1965. Earlier the Government of Mysore had honoured him with the Public Service Award in 1962, and in 1974, the Mysore University honoured him with the Doctor of Science (Honoris Caus) degree. The secrets of his success were his vision to see what was needed and what was possible and his courage to start new institutions where others felt impossible to succeed. His philosophy was one of service to one's family, friends and the world's people as God's one big family. He lived through his philosophy and his name will be forever etched in people's memory.

FOUNDER OF TAPMI

Late Shri Tonse Ananth Pai

Padma Bhushan Awardee
(1922 - 1981)

The year 2022 is the centenary year of the birth anniversary of Shri Tonse Ananth Pai (17 January 1922 – 29 May 1981), one of the few men who catapulted a small village into a model for the world to follow. In a career spanning thirty-eight years, Shri T A Pai's contributions to nation-building took many forms. He played roles as a politician, held positions such as that of the Railway Minister of India, was in the education, insurance and banking sectors. Under Shri Ananth Pai's stewardship, Syndicate Bank embarked on ground-breaking rural expansion programs with innovative features. In 1970, Shri Ananth Pai was appointed as the chairman of Life Insurance Corporation of India (LIC). Pleased with his tremendous contribution the government conferred the award of Padma Bhushan (a national honour in India) in the year 1972. Dr T. A. Pai was also the first Chairman of the Indian Institute of Management, Bangalore. His commitment to nation building and dedication to social development have made him a torch bearer in India's illustrious history.

He founded the T. A. Pai Management Institute in 1980, which has gone on to become one of the top business schools in the country.





TAPMI

(A constituent unit of MAHE, Manipal)



OUR LEADERS SPEAK



VICE CHANCELLOR'S - WELCOME MESSAGE

Lt Gen (Dr) M. D. Venkatesh
VSM (Retd). Vice Chancellor

Dear Aspirants,

Congratulations! You are about to embark on your new life at T. A. Pai Management Institute (TAPMI), and we are eager to welcome you to your new home at one of the premier Management schools and a constituent unit of Manipal Academy of Higher Education, an Institute of Eminence (IoE), Deemed to be University. The Program is designed to prepare you to thrive in the fast-paced, ever-changing world. We are delighted that you have now become a part of TAPMI and MAHE. I would advise you to take full advantage of world-class academic research and infrastructure facilities that are available at TAPMI and make the most of your time at TAPMI. I am confident TAPMI will provide you with world class student experience.



DIRECTOR'S MESSAGE

Prof. Madhu Veeraraghavan

Director, T A Pai Chair Professor of Finance and
Dr TMA Pai Endowment Chair in Management
Research

Dear Aspirant,

Greetings from TAPMI!

You just indicated you have an excellent sense of selection by putting TAPMI in your basket of options for your best-in-class MBA. We deliver programs that are rigorous, relevant and focused on your holistic development. Our systems, processes, and people are working in a mission mode, putting you at the centre of the Institute. This commitment has driven us to keep improving in the last 40 years; we continue to stand tall in the fast changing and competitive landscape of management education in India. TAPMI has merged with the Manipal Academy of Higher Education (MAHE), an Institution of Eminence recognized by the Government of India. Going forward, a TAPMI student will be able to access world-class resources of both institutions, creating a unique and rich student experience. We are part of a select group of institutions with the coveted double crown [AACSB and AMBA] accreditations. These recognitions are a testimony to the quality of our faculty, staff and facilities. Today, a degree from TAPMI is a passport to professional success; our stellar placement record and corporate connect is a consequence of our high academic standards. TAPMI offers an exciting bouquet of programs, a prospective student will make a choice based on their career aspiration. Irrespective of the Program choice, we assure you of an enriching experience that draws strength from synergies across all our Program offerings.

Wishing you all the very best. Godspeed!!!
Here's hoping to find you in TAPMI's Batch of 2023-2025; as you can see, we are eagerly waiting for you!



TAPMI

(A constituent unit of MAHE, Manipal)



ABOUT TAPMI





TAPMI

(A constituent unit of MAHE, Manipal)



TAPMI TODAY

B-School Rankings

CSR-GHRDC B-Schools Survey 2022

#1 – Amongst the Top Private B-Schools In India (Supreme B Schools Category)

#1 – in Faculty, Publication, Research, Consultancy, MDP & Other

Programs Among Govt. and Private B-Schools

#2 – Placement (Domestic & International), USP, Social Responsibility, Networking & Industry Interface Among Govt. and Private B-Schools

Outlook Magazine

#4 – Amongst the Top Private MBA Institutions In India

#4 – Amongst the Top Private Standalone Institutions

#2 – Amongst the Top Private B Schools – South Zone

India Today

#21 – Overall at the National level

Business Today

#21 – Overall at the National level

National Institutional Ranking Framework (NIRF)

India Rankings 2022 – Management

#38 – among top B-Schools in India (Management Category)

MBA Universe

#20 – Overall at the National level

Careers 360 B-School Ranking 2022

#5 – Amongst the Private B-Schools in India

BW Businessworld B-School Ranking 2021

#18 – Overall at the National level

Accreditations



Initially accredited in 2012. Re-accredited in 2017 & 2022 for a period of 5 years each. Current accreditation is valid till 2027.



Initially accredited in 2018 for a period of 3 years and re-accredited in 2021 for a period of 5 years. Current accreditation is valid till August 2026.



PGDM (MBA) program accredited for 6 years till June 2022 and applied for re-accreditation. PGDM (MBA)-BKFS accredited for 3 years till June 2024.



All 5 MBA programs offered at TAPMI are approved by AICTE.



TAPMI is a signatory to PRME (Principles of Responsible Management Education), which is a United Nations supported initiative and the largest organized relationship between the UN and business schools across the world. TAPMI has made a commitment to advancing values such as sustainability, responsibility and ethics in teaching, research and thought leadership.

ACADEMICS AT TAPMI





TAPMI

(A constituent unit of MAHE, Manipal)



TAPMI OFFERINGS

TAPMI believes that academics should facilitate the holistic development of the students who join the 2-year postgraduate programs. TAPMI's approach brings out the best in the students through continuous evaluation and insistence on frequent and high-quality work outputs.



Master of Business Administration



MBA – Banking & Financial Services (BKFS)



MBA – Human Resource Management (HRM)



MBA – International Business (IB)



MBA – Marketing



TAPMI

(A constituent unit of MAHE, Manipal)



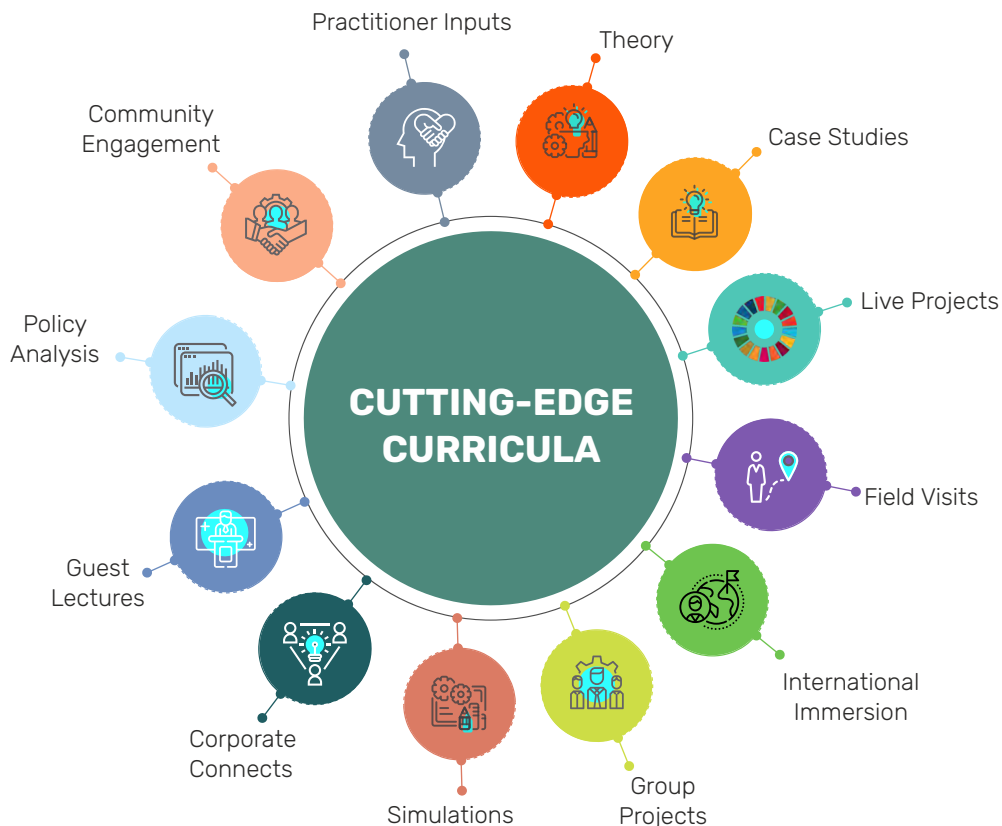
MASTER OF BUSINESS ADMINISTRATION

CUTTING-EDGE TAPMI MBA ADVANTAGE TO BOOST CAREERS



The Mission of TAPMI's flagship MBA – Master of Business Administration Program is “Leadership through Value-Creation”. We create well-rounded leaders with a cross-functional orientation. The main highlights of the program are as follows –

- Divided into **six trimesters** spread over two years of the Program
- First year has **core courses** such as Accounting, Organizational Behaviour, Finance, Economics, Human Resources, Communication, etc
- Year 2 **electives** in Marketing, Finance, Operations, IT, Analytics and Strategy
- High emphasis on **experiential learning, values and ethics**, leadership focus, and development of a balanced view of life.
- **8 week-long summer internship projects** with premier corporate organisations across the country





TAPMI

(A constituent unit of MAHE, Manipal)



MBA - BKFS

PIONEERING NICHE COURSE FOR FINANCE ENTHUSIASTS



TAPMI's MBA-BKFS program focuses on “Value-Creation through Financial Analysis”. Aided by the state-of-the-art TAPMI Finance Lab, this course enables students to have a managerial career in the fields of banking and financial services with leading national and multinational banks and financial institutions.

- Two-year MBA course with a **focus on Banking and Capital Markets**, catering to banking and financial services industry.
- Career paths in **Investment and Corporate Banking**, Stock Broking, Financial Analyst, Treasury Operations, Asset Managers, Credit

Rating Analyst, roles with exchanges/regulators, etc.

- Courses across both years are **integrated with Bloomberg terminals**.
- Experiential learning through a one-of-a-kind course in India, **Student Managed Investment Course (SMIC)**.
- Coursework aligned with the **Candidate Body of Knowledge (CBoK) of CFA/FRM Programs**.
- **Three-week on the job training** with Bombay Stock Exchange or the State Bank of India training institute after 8-week long summer internship.

MBA - HRM

LEARNING PEOPLE MANAGEMENT FROM THE BEST

With a mission of creating value through people, the program is focused on delivering a comprehensive course curriculum in human resources to build exceptional behavioral (individual, team and leadership), functional, strategic and institutional (employee relations and industrial relations) HR competencies which empowers participants to become strategic partners for business.

- Two-year MBA program focused on **creating thought leaders in human resources** who can effectively manage people and organizations for high performance.
- Partnered with **Society for Human Resource Management India** to co-design the MBA-HRM curriculum.
- Graduates of this Program will be **adept in**

leadership and navigation, business acumen and consultation, global/ national and cultural relationship management, technical competencies and HR functional skills

- **Elementary courses in year 1** including Finance and Economics, Marketing, Operations Management, and Information System Management.
- **Core-courses in human resource management** in year 2, advance courses in Labor Laws, Analytics and Organizational Development
- **Extended summer internships** up to five months to take up significant projects like organization restructuring, mergers and acquisitions etc.





TAPMI

(A constituent unit of MAHE, Manipal)



MBA - IB

GLOBAL EXPOSURE FOR YOUR DREAM INTERNATIONAL CAREER



MBA IB Program Mission 'General Management mastery with international business effectiveness'

- Mastery of the International Business domain with **enhanced functional skills in cross country contexts, global uncertainty and re-globalisation**
 - Critical thinking skills, international negotiation ability, cross cultural literacy and geo-political awareness
 - **International Live Project Management** and real-time advisory in collaboration with xCulture.org, **International Immersion and**
- Study abroad option** at leading business schools overseas
 - Effective corporate communication via **foreign language certification** via Goethe Institute and Alliance Francaise, and advanced business English proficiency
 - Alignment with **GARP** Sustainability body of knowledge, with **certification**
 - Adaptive leadership via **outbound training, cross cultural sensitivity and Young Leadership (YLP) Program**

MBA - MARKETING

LEARN MARKETING FROM THE COUNTRY'S BEST



TAPMI's MBA – 2-year PG management Program in Marketing provides foundational training in broad business and management disciplines and specialist training in Marketing. The advanced intensive learning delivered in the second year through Super Specialization Tracks equips the students with the necessary skills to excel in the leadership role in the field of marketing.

- Aimed at **producing marketing professional to play leadership roles** in the domain of marketing, sales and customer facing roles
- Choose from **3 super-specialization tracks** – Digital Marketing, Sales and Customer Service

Management and Brand and Product Management.

- **Live projects and Applied learning segment** in addition to summer internship
- **Mentoring by TAPMI alumni** holding senior sales positions
- **Sector specific specializations** in the second year delivered by industry professionals
- **Successful track record of attracting companies** in FMCG, durables, retail, banking, and B2B sectors offering sales management roles for final placements.



TAPMI
(A constituent unit of MAHE, Manipal)



An aerial photograph of a university campus. The campus features several modern, multi-story white buildings with flat roofs, arranged in a cluster. The buildings are surrounded by dense, lush green forests. A road or path is visible winding through the campus. The background shows a hazy, mountainous landscape under a clear sky.

PLACEMENTS AND CORPORATE ENGAGEMENT AT TAPMI



TAPMI
(A constituent unit of MAHE, Manipal)



TAPMI PLACEMENTS

100% Placement Record year-on-year



Key Corporate Engagement programs

- **Individual career planning and counselling** for all 550+ students
- **2 month intensive Summer internships** leading to over 28% PPOs in 2021-22:
- **Live projects with industry and faculty guides**
- **Disha:** Annual workshop with CFO/CEO/Company Lead level interactions from over 146 guests from 139 companies(2022)
- **Advisory Boards** to create curriculum based on industry trends
- **Sponsored Competition Participation** for personal growth
- **Sectoral and industry-specific Workshops**
- **Industry immersion workshops**
- **Practitioners' Co-delivery of electives**
- **7000+ Alumni Connect**

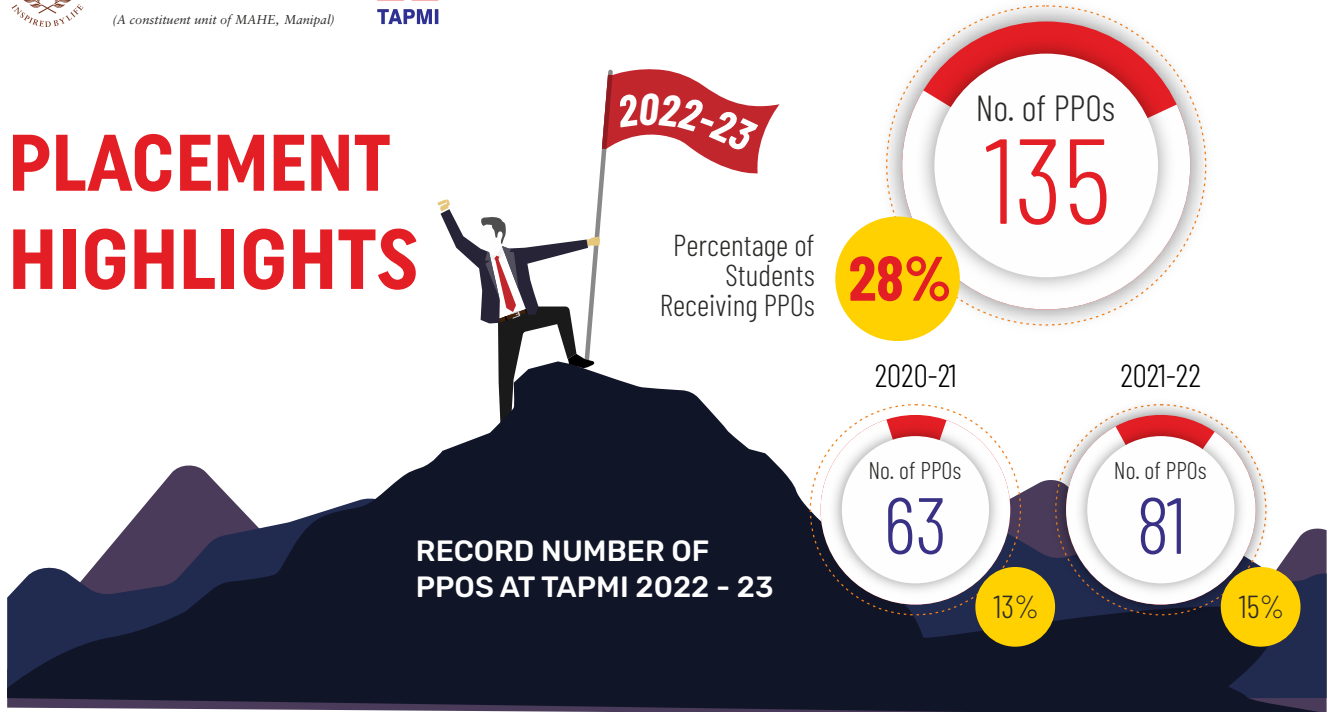
Placements 2021-22



TAPMI
(A constituent unit of MAHE, Manipal)



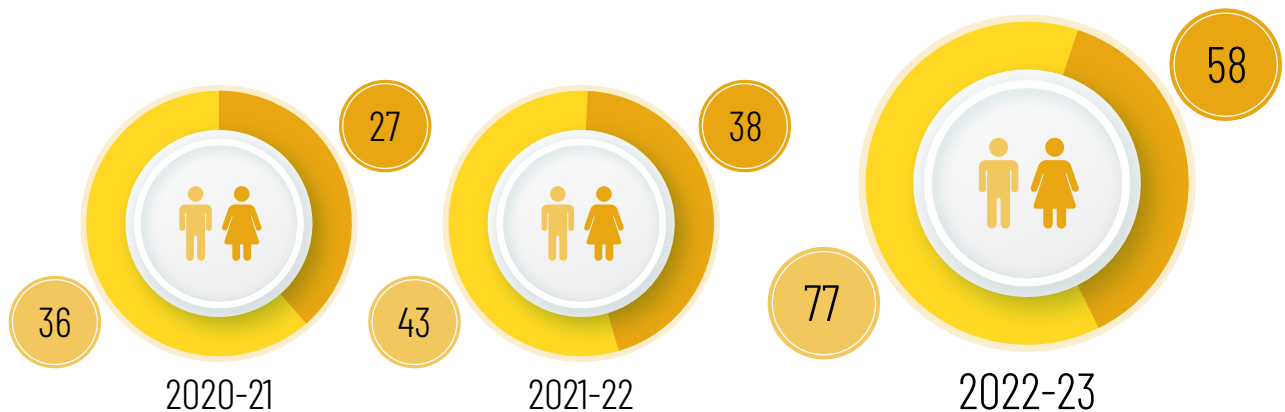
PLACEMENT HIGHLIGHTS



STEADY RISE IN INTERNSHIP STIPENDS – LAST 3 YEARS

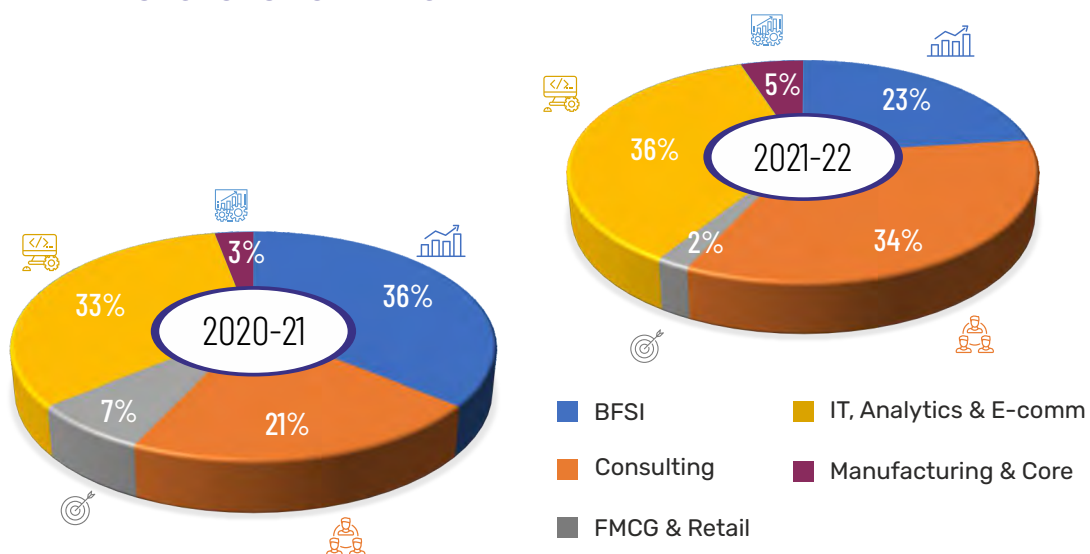
	2020-21	2021-22	2022-23
Highest Stipend (INR)	₹85,000	₹1,20,000	₹1,20,000

GENDER AGGREGATED PPO DATA – LAST 3 YEARS



****The placement process for 2021-23 batch is ongoing**

PROMINENT SECTORS FOR PLACEMENT



PLACEMENT RECORD – LAST 2 YEARS



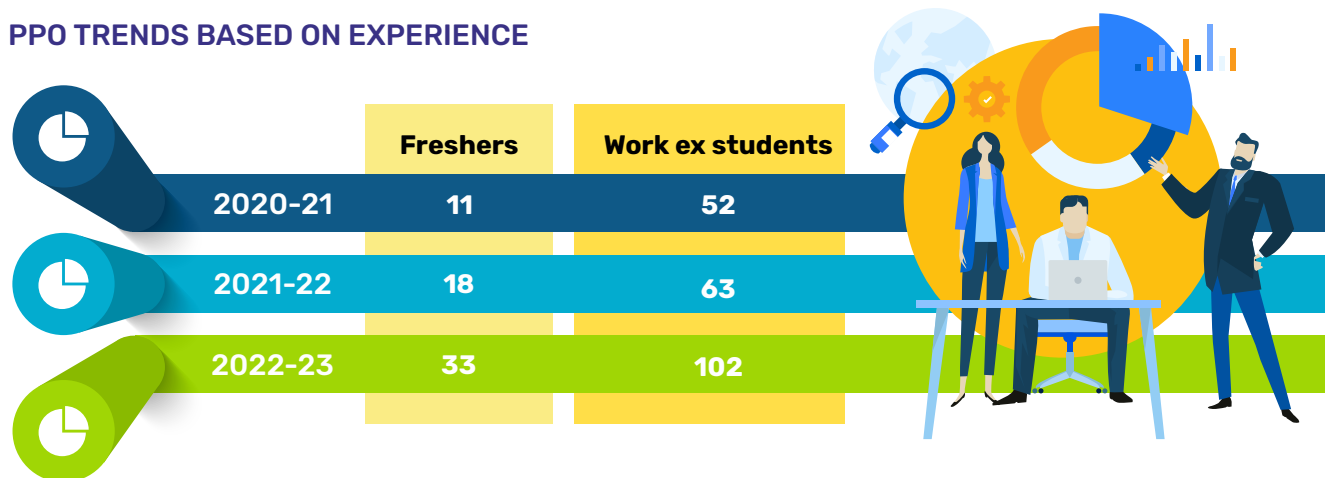
**2021-22
HIGHEST CTC**

32 LPA

**2020-21
HIGHEST CTC**

25 LPA

PPO TRENDS BASED ON EXPERIENCE



****The placement process for 2021-23 batch is ongoing**



TAPMI

(A constituent unit of MAHE, Manipal)



Key Profiles:



Automotive, Aviation And Aerospace
Supply Chain, Logistics And
Transportation
Hospitality And Real Estate
Healthcare
IT & Analytics
FMCG, Retail & E-commerce
BFSI
EdTech
Consulting
Risk & Compliance
Mobilization-operations
Product Management
Management Trainee
Organization Development &

Talent Acquisition Consultant
Management Consultant
Manufacturing Analyst
Pre-sales Consultant
Program/product Manager - ERP/SAAS
Sales Strategy Consultant
Senior Management Consultant
Strategy And Transactions Consultant
Hr Assistant Manager
Product Manager
Area Sales Manager
Area Business Manager
Management Trainee
Area Manager
Finance Consultant

****The placement process for 2021-23 batch is ongoing**

Innovation Consultant
Senior Manager (Brand & Collaborations)
Sales Executive Trainee
Marketing Specialist
Project Manager
Investment Banking - Analytics
Senior Analyst
Commercial Banking Credit Risk
Financial Analyst
Global Finance Business Analyst
Analyst (Financial Operations)
Regulatory & Legal Support Advisor
CFO Associate
Industry Research Management Trainee
Financial Consultant
Manager - Credit
Manager - Finance & Accounts
Finance Associate
Investment Analyst
Consumer Banking
Consultant/principal - Digital Transformation
Cyber Risk Consultant
Tech Risk Consultant
Digital Commerce Consultant





TAPMI

(A constituent unit of MAHE, Manipal)

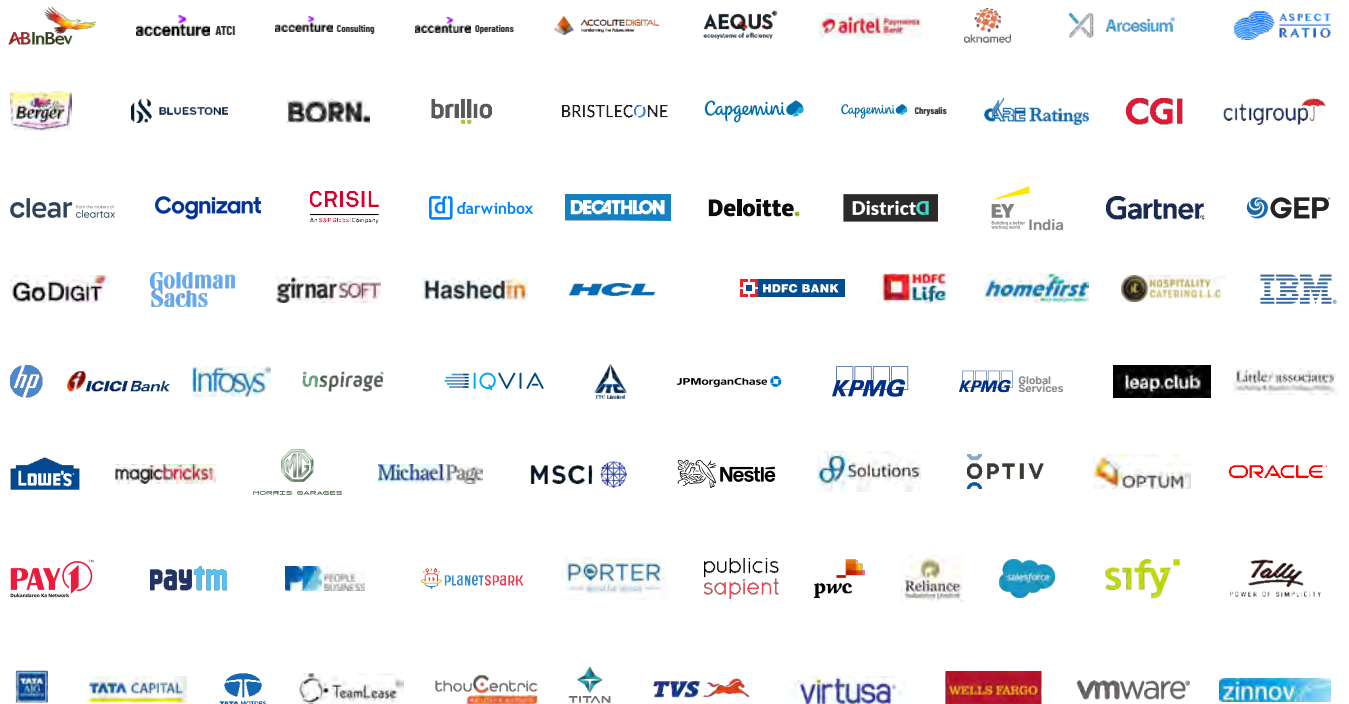


Package	2023**	2022
Top 50	₹ 20.82	₹ 19.64
Top 100	₹ 18.68	₹ 16.96
Top 150	₹ 17.45	₹ 15.79
Top 200	₹ 16.72	₹ 14.99

₹in Lakhs

****The placement process for 2021-23 batch is ongoing**

TOP RECRUITERS



TAPMI ALUMNI





TAPMI

(A constituent unit of MAHE, Manipal)



TAPMI ALUMNI

Alumni Relations Committee (ARC) of TAPMI with a mission to "Connect, Bond, Network" acts as a bridge between the alumni and the Institute. TAPMI has a network of 7000+ alumni across the globe who have been making the institute proud of their achievements. ARC aims to maintain close ties with the alumni of TAPMI and to promote interaction between alumni and the institute. Various events like alumni meets, initiatives, alumni mentorship, social media campaigns and webinars are held in order to strengthen the relationship between the alumni, students, faculty members and staff.

Additionally, ARC makes sure that all our alumni get to know about the job opportunities through the Portal available in the industry. By engaging alumni, we wish to enhance the network, involvement, and support TAPMI, while providing a mutually beneficial relationship. We solidify the connection between TAPMI's past, present, and future. Please find below the infographics of our institute's former students below to get a better idea of how much growth our students have made over the years. Moving forward without turning around is the only option at this point !!!

HIGHLIGHTS

GLOBAL NETWORK OF ALUMNI



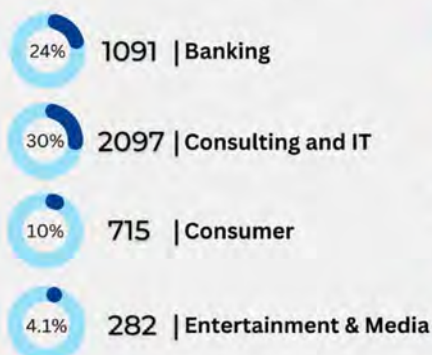
ENTREPRENEURS



C-SUITE & BOARD



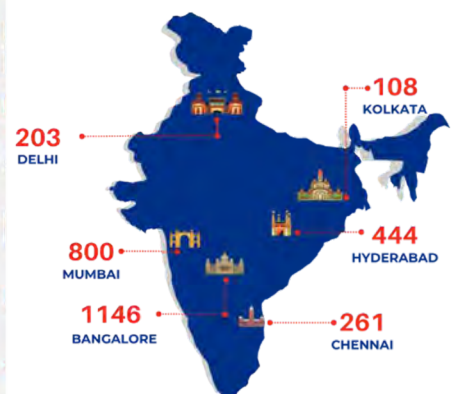
SECTOR DIVERSITY OF ALUMNI



TOP EMPLOYERS



ALUMNI ACROSS METROCITY



Alumni Relations Committee (ARC) of TAPMI with a mission to “Connect, Bond, Network” acts as a bridge between the alumni and the Institute. TAPMI has a network of 7000+ alumni across the globe who have been making the institute proud of their achievements. ARC aims to maintain close ties with

the alumni of TAPMI and to promote interaction between alumni and the institute. Various events like alumni meets, initiatives, alumni mentorship, social media campaigns and webinars are held in order to strengthen the relationship between the alumni, students, faculty members and staff.



Rajsekar Jayashankar
Batch: 1994-1996

Current Firm:
Hexaware Technologies

TAPMI MBA has helped me to have a structured approach



Neha Joshi
Batch: 2011-2013

Current Firm:
Panduit

TAPMI has helped me understand all aspects of the business and make a holistic decision while trying to address any challenges. This has allowed me to set myself apart from other professionals and get opportunities that would otherwise be limited to more experienced individuals.



Aabhaa I P
Batch: 2012-2014

Current Firm:
Biocon

TAPMI MBA has helped me to meet people from different walks of life and backgrounds.



TAPMI

(A constituent unit of MAHE, Manipal)



“



Arpit Khuraswar
Batch: 2010-2012

Current Firm:
MTX Group Inc

MBA has provided me the ability to look at things in a holistic way, apply systems thinking. It helped me with tools and methodology that enable me day in and out to prioritize the solutions that can solve critical and majority of the problems and not dwell on trying to find a solution for every problem. It also allowed me to look at all aspects in life - personal and professional, from the perspective of causality. This helps tremendously in understanding the root cause and arriving at a solution much quicker. Finally, it helped me understand that the problems need to be tackled first and head-on.

”

“



Aditya K Mehta
Batch: 2000-2002

Current Firm:
Orion Group

The 2000-02 TAPMI stint remains one of my life's best experiences to date. The “Outbound” learning program made me a man in 2001. TAPMI's perceived locational disadvantage (Manipal's absence of immediate access to the major cities in India), during the early 2000's, has emerged as its biggest strength and USP, more so after the advent of Covid, thanks to the all-pervading virtual world. The focus of the entire faculty as well as students is on intense academic rigor, on the stand-alone campus, for 2 years. This intensity in academics, nestled in its sprawling campus and state of the art infrastructure, along with TAPMI's diversely successful alumni will stand the institute in good stead in the near future.

”

“



Sachin Mhatre
Batch: 2004-2006

Current Firm:
Larsen and Toubro Infotech

TAPMI transformed my approach to life!

I joined TAPMI in 2004 after working for 4 years in multiple software engineering roles in the IT industry. TAPMI helped me structure my thinking and approach towards solving problems - both at the workplace as well as in personal life. It helped to build a strong foundation in my specialized streams of marketing and IT systems but also in general management. This has helped me to successfully navigate and enjoy my career across multiple management and leadership roles as well as across multiple geographies. In all, I would say transform with TAPMI to become a future leader.

”

ADMISSION AT TAPMI





TAPMI

(A constituent unit of MAHE, Manipal)



ADMISSION PROCESS



The Admission Process provided below explains the common process followed across all Programs.

- Each MBA Program may have additional components for selection based on its specific requirements.
- Shortlist and Merit list for each Program is separate and independent of each other. Shortlist/Selection in one Program does not guarantee shortlist/selection for the other Program (for candidates who apply to more than one program).

Minimum Eligibility

A Graduate Degree from a recognized University with not less than 50% marks (Final year students may also apply. However, the admission shall be cancelled if they obtain less than 50% in their graduation).

Stage I: Shortlisting

Applicants will be shortlisted on the basis of valid CAT (Common Admission Test) 2022/XAT (Xavier Aptitude Test) 2023/GMAT (Graduate Management Admission Test) January 1, 2018- January 31, 2023/ NMAT by GMAC™ 2022 scores, whichever is higher. Applicants can submit more than one test score.

Apart from high test score, TAPMI considers the overall profile of candidates. For example, the shortlisting considerations include academic profile (10th, 12th, Graduation marks), work experience, extra- curricular achievements, achievements in

sports, contribution to social activities, entrepreneurial spirit, diversity, leadership potential, integrity and values. The entrance examination cut-off may vary slightly each year across programs, depending upon the profile of applicants and the suitability of the profile to specific program(s). Students shall be informed about the shortlist decision on their registered email address.

Stage II: Admission Process

The stage II of TAPMI admission process consists of Moderated Group Discussion (MGD) and Personal Interview (PI).

1. Moderated Group Discussion (MGD): Moderated Group Discussion tests the ability of the applicant to interact within a group and enrich the discussion. MGD also evaluates applicant's skills in Problem Solving, Confidence, Assertiveness, Persuasion, Collaboration and Communication.

2. Personal Interview (PI): Through the personal interview TAPMI evaluates the applicant's overall attitude and suitability towards management education, including aspects such as Self-Awareness, Self-Management, Social Awareness, Leadership and Communication.

*TAPMI makes suitable changes every year in the MGD/PI process to select bright and deserving candidates. Shortlisted candidates will be informed about changes for 2023-25 admission process, if any.

NRI/NRI Sponsored Eligibility Criteria

TAPMI also accepts applications for the MBA program from the following (Please visit website/contact Admissions Office for more details):

1. NRI/NRI Sponsored Candidates
2. Overseas Citizenship of India (OCI) category candidates
3. Foreign Nationals

Final Selection

The final selection of the candidate is based on the following:

Category	% Weightage
Score in Entrance Test (CAT, XAT, GMAT, NMAT)	35
Score for academic performance (in X, XII, Graduation Degree)	15
Group Discussion/Personal Interview	45
Weightage for Gender Diversity & Extra-curricular Activities	05
Total	100

*As per the AICTE APH 2022, subject to change

Please refer to the website for details.

Last date for submission of online application is December 20, 2022.

Application fee (Non-refundable)

Single program	: INR 1,850
Any Two programs	: INR 2,450
Any Three programs	: INR 3,200
Any Four programs	: INR 4,000

Note

1. TAPMI does not accept application in hardcopy mode. All applications must be submitted online.
2. The above procedure may be changed depending on the developments that may arise.
3. Any disputes regarding the admissions to these programmes are subject to the jurisdiction of Udupi only.
4. The application fee is non-refundable.
5. TAPMI uses CAT/XAT/GMAT/NMAT by GMAC™ scores for shortlisting the candidates. IIMs, XLRI and GMAC have no role either in the selection process or in the conduct of the programme.
6. There is no "Management Quota" at TAPMI.

Ragging is completely banned. Anyone found guilty of ragging and /or abetting ragging is liable to be punished.





TAPMI
(A constituent unit of MAHE, Manipal)



FEES AND OTHER DETAILS



Fees

- Tuition fee – (common for all programs)
 - Domestic students - INR 8.25 lakhs per year
 - NRI-USD 20,000 per year
- Alumni Lifetime Membership fee - INR 20,000
- Caution deposit (Refundable) - INR 40,000
- International immersion Program - INR 80,000 (only for students enrolled in MBA & MBA-IB Program)
- Training Cost at SBI and BSE - INR 50,000 (only for students enrolled in MBA - BKFS Program)

Educational loan support

TAPMI has associated with several banks to ensure quick financial assistance for students interested in availing educational loans. Some of the banks providing educational loans to TAPMI students are: Canara Bank, State Bank of India, HDFC Credila, Axis Bank, ICICI Bank, HDFC Bank, Indian Bank

SCHOLARSHIPS & AWARDS

Scholarships & Awards up to INR 2.9 crores

TAPMI appreciates and values merit, and awards scholarships to meritorious students. For deserving students, TAPMI provides awards and scholarships up to INR 2.9 crores. Under Dr. Ramdas Pai Merit Scholarship scheme, TAPMI provides Scholarships worth more than INR 2.4 crores, benefitting 50

students of the batch. The scholarship amounts to a fee waiver of 30% of the tuition fee per year.

TAPMI also provides Academic Merit Awards and Other Scholarships including Dean's Roll of Honour, YLP Stipend, and CFA/ FRM/ CMT Scholarships etc.





TAPMI

(A constituent unit of MAHE, Manipal)





LIFE AT TAPMI



TAPMI

(A constituent unit of MAHE, Manipal)



INFRASTRUCTURE

World-class infrastructure to facilitate learning



- Fully equipped 100 seater library
- Classrooms fitted with AC, smart boards, dual projectors, audio-visual facilities and high-speed internet
- Residential facilities of twin-sharing basis with AC and individual washrooms for every room
- Hostels with Lifts, power back-up, WiFi and 6 common rooms for games and relaxation
- Excellent house keeping staff to keep the campus spotlessly clean
- Surrounded by 44 acres of lush greenery and peace
- Well equipped gym facilities for the fitness freaks
- Campus store and hair salon facilities
- Campus medical facilities available and direct connect to the KMC, Hospital for emergencies
- Well-lit, spacious and green campus with running paths, broad walkways, garden seating and lounges for enjoyment, group work and assignments!
- Student centre and canteens with multiple food vendors providing variety of cuisines
- Night canteens for chai and conversations!

CAMPUS LIFE

Creating bonds for a lifetime

- Make friendships for life
- Relax in movie screenings with classmates
- Have endless cups of chai and Maggi in the night canteen
- Play with the local dogs in the front of the campus
- Go bird watching and participate in the riders and bikers' group
- Excite the sportsperson in you with state-of-the-art basketballs, football, cricket and badminton courts for rejuvenation after a day of classes and assignments



- Celebrate all festivals such as Ganesh Chaturthi, Durga Puja, Holi, Diwali etc
- Enjoy Onam and Garba with local food, local dress and friends
- Join and learn from over 30 student teams such as the ATHARVA team, ESPIRIT, LIME, Competitions Committee of TAPMI to explore the creative, competitive and event managing side of you!
- Croon to (YTBN) Yet-To-Be-Named, TAPMI's very own band!





TAPMI

(A constituent unit of MAHE, Manipal)



MANIPAL_LIFE

Global cuisines such as Italian, Asian, Arabic, Indian, Chinese and Mexican options

2 multiplexes and multiple shopping opportunities

Well connected Manipal Town



30000 national and international student crowd



10 kms for the Malpe Beach



Pristine beaches and beach shacks to be explored

- TAPMI, Manipal is in the Udupi district of Karnataka, approximately 70 km north of Mangalore on NH 66.
- Manipal is known for its high-class institutions of Medicine, Engineering, Dental, Hotel Management, Law and Pharmacy. It is easily accessible by road from Mangalore and Bangalore, both of which are well connected by air and rail from all major cities in India.
- The closest airport is the Bajpe Airport, Mangalore. Daily flights are available from Mangalore to Bengaluru, Mumbai, Delhi, Chennai, Cochin, Hyderabad, and Kolkata.
- Cab services are available from Mangalore Airport to Manipal and it takes about 75 minutes to reach the Campus.
- Udupi is a major railway station on the Konkan Railway route connecting Mangalore to Mumbai.
- By road, Manipal is 8 hours away from the capital city Bengaluru and an hour- long journey by road from Mangalore on NH 66.
- Manipal has an excellent bus transport system. State-owned Volvo buses ply from Mangalore frequently, and KSRTC buses are available every night from Bengaluru.

SUSTAINABILITY@TAPMI

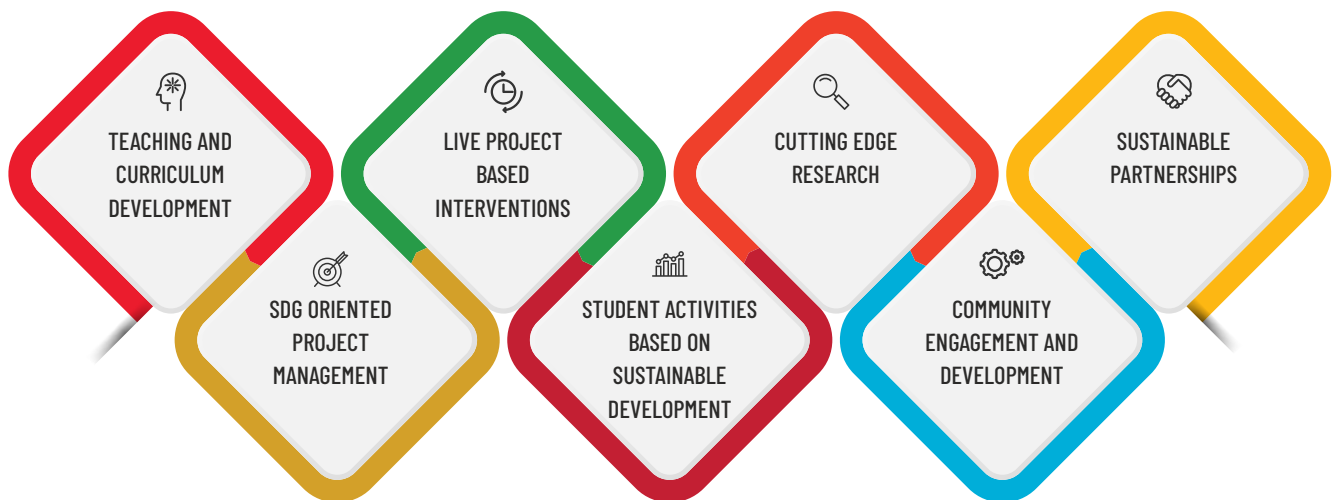
Touching lives through sustainability

At the T A Pai Management Institute (TAPMI), Manipal, we believe that imparting knowledge and skills to contribute towards sustainable development is an essential part of creating business leaders for tomorrow. TAPMI is committed to education for business excellence keeping tenets of sustainability in mind. People, planet and profit are central to our teaching at TAPMI and we believe in creating minds that are equipped to deal with the challenges of the future.

TAPMI looks at sustainable development in all aspects of its work, from student engagement,

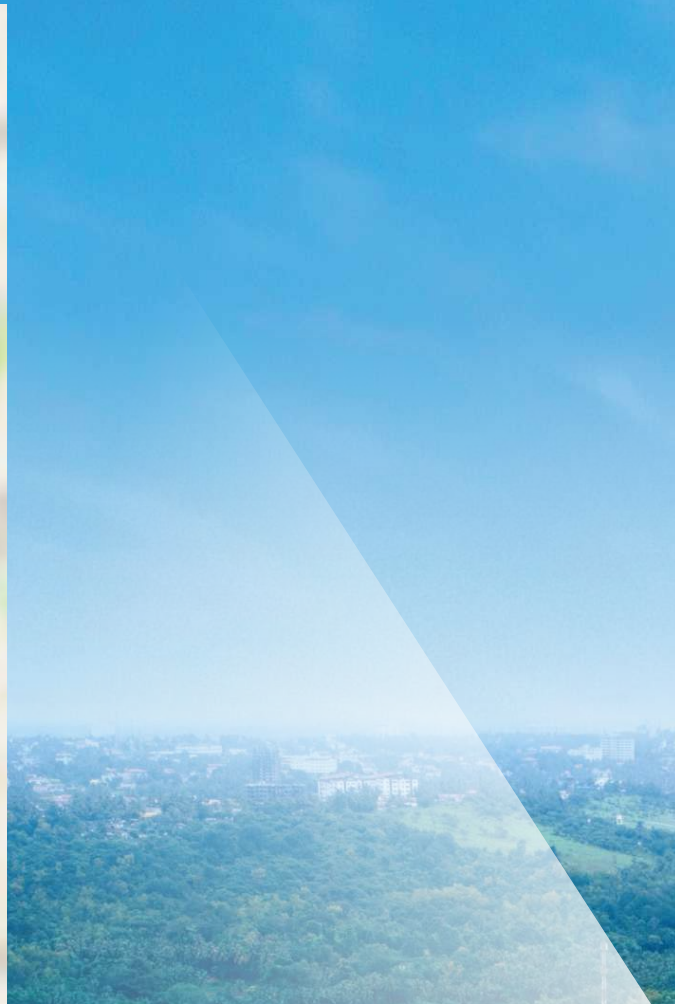
partner engagement, management of our premises to cutting edge research in sustainable development. Sustainability is a critical part of the TAPMI way of life. From research based on SDG goals, community engagement and participation in local development, curricula and live projects to projects and partners in the spheres of sustainability, we at TAPMI, have integrated sustainability into our processes.

TAPMI's engagement with sustainability can be encapsulated into specific processes. These can be broadly classified into the following -



Integrating sustainability into every aspect of work, TAPMI believes that leaders of the future can be created who will be able to perform as pioneers towards holistic growth.

Come join us in our journey to create better communities and informed managers



**WHERE
LEARNING
IS FOR LIFE**





TAPMI

(A constituent unit of MAHE, Manipal)



T A PAI MANAGEMENT INSTITUTE (TAPMI)

Constituent unit of Manipal Academy of Higher Education (MAHE)



Post Box No.9, Manipal - 576 104, Karnataka.
Ph: 0820-2701000 tapmi@manipal.edu

www.tapmi.edu.in

